



Parks & Recreation Advisory Commission Meeting Agenda

April 16, 2025
4:30 PM

City Hall

Aspen Room
415 W. 6th Street
Vancouver, WA
Online Access: [Teams Link](#)

- 1. Call to Order and Roll Call - 4:30pm**
- 2. Approval of Minutes - 4:35pm**
 - a. Approval of minutes from March 19, 2025 PRAC Meeting.
- 3. Community Forum - 4:37pm**

To provide public testimony, please see instructions below.
- 4. Workshop - 4:40pm**
 - a. Parks Impact Fee (PIF) Program Overview
 - b. Summer Events & Recreational Programming
 - c. Council Approval of Bee City USA Designation
- 5. Commission and Staff Reports - 5:52pm**
 - a. Department Director
 - b. Commission Chair
 - c. Evergreen School District
 - d. Vancouver Public School
 - e. Parks Foundation
- 6. Open Discussion & New Business - 5:57pm**

Parks & Recreation Advisory Commission

Members

Jayne Haygood, **President**
Angilo Fletcher, **Vice President**

Jeremy Robbins
Jenny Thompson
Stephen Wille
James Luce
Valerie Striplin
AJ Panter, VPS
Cale Piland, EPS Parks Foundation
(vacant)

**Parks, Recreation and
Cultural Services Department**
P.O. Box 1995 Vancouver, WA
98668
360-487-8311
TTY: 711
cityofvancouver.us

Adjournment - 6:00pm

- a. **PUBLIC NOTICE: Please note that our May PRAC meeting will take place offsite at Marshall Community Center.**

Request (List the action needed by Council for the item approval)
est:

Community Forum Instructions

The public is invited to speak regarding any issue. Members of the public testifying are asked to limit testimony to three minutes. There are three ways to provide comments:

1. In Writing: Public comments can be submitted in writing (name, address, contact information and comments) via email to parksrecculture@cityofvancouver.us by 5 pm on the day before the meeting.
2. Remotely: Pre-register by phone at 360-487-8311 or email parksrecculture@cityofvancouver.us by 5pm the day before the meeting
3. In Person: Pre-register by phone at 360-487-8311 or email parksrecculture@cityofvancouver.us by 5pm the day before the meeting or fill out a Public Comment form in person prior to the start of the Community Communications portion of the meeting

City Hall is served by C-TRAN. Route information and schedules are available online at www.c-tran.com. You also may reach C-TRAN at (360) 695-0123 for more information on times, fares, and routes.

Anyone needing language interpretation services or accommodations with a disability at a Vancouver City Council meeting may contact the City Manager's staff at (360) 487-8600 (RELAY: 711). Assistive listening devices and live Closed Captioning are available for the deaf, hard of hearing and general public use. Please notify a staff person if you wish to use one of the devices. Every attempt at reasonable accommodation will be made. To request this agenda in another format, please also contact the phone numbers listed above.

Meeting Minutes

Wednesday, March 19, 2025
4:30 p.m.
Firstenburg Community Center
Resource Classroom

Commissioners Present:

Haygood, Thompson, Striplin, Wille, Luce, Fletcher, and Robbins.

Commissioners Absent:

Piland, and Panter

Staff Present:

Perlick, Burton, Meade, Brosius, Johnson, Heath, Baynard-Cooke, Snyder, Nilo, Stokke, Tubberville, Hull, Guzman, Gutierrez, and Donovan.

Guests: None

Item 1: Call to Order

Vice Chair Fletcher called the Parks and Recreation Advisory Commission (PRAC) regular meeting to order at 4:31 p.m. in the Resource Classroom at Firstenburg Community Center and online via Microsoft Teams. Commissioners Piland and Panter were absent.

Item 2: Approval of Minutes

PRAC approved February 19, 2025, meeting minutes by consensus with no changes.

Item 3: Public Comment

None presented.

Members

Jayne Haygood
President

Angilo Fletcher
Vice President

Jeremy Robbins
Jenny Thompson
Stephen Wille
Valerie Striplin
James Luce
AJ Panter, VPS
Cale Piland, EPS
Vacant, Parks Foundation

**Parks, Recreation and
Cultural Services
Department**

P.O. Box 1995
Vancouver, WA 98668
360-487-8311
TTY: 711
cityofvancouver.us

To request accommodation or other formats, please contact:
Alicia Nilo | 360-487-8311 | TTY: 711 | parksrecculture@cityofvancouver.us

Item 4: Recreation Division – Program Overview

Perlick provided a background on the recent fee increases in Recreation programming and shared that we will be watching revenues closely this year as we track registrations. Angela Brosius (FCC Director) and Andy Meade (MCC Director) gave an overview of the current Recreation updates at Firstenburg Community Center and Marshall Community Center.

Brosius and Meade recognized the aquatics staff who responded to a medical emergency, highlighting the lifeguard honorees celebrated at the [2025 Vancouver Fire Department Awards Ceremony](#). The “Life Saving Award” was presented to Camille Wendlandt, Kendall Lotka, Sawyer James, Harley Hogan, Nelli Slivkov and Kevlar Wood before Sherie Linstead shared words of appreciation and gratitude for the actions of the awards recipients.

An overview of the Recreation Division was given, including the management staff of both facilities and the team roles, which include 44 team members and 36 FTEs:

- Center Manager
- Administrative Assistant
- Recreation Coordinator
- Recreation Specialist
- Facility Assistant
- Customer Service Representative
- Seasonal Positions

Ongoing facility maintenance investments include the Firstenburg Pool Slide and the Firstenburg Gymnasium, as the center turns 20 years old next year. Meade and Brosius also reported that after budget reductions, impacts to direct staff were minimized by assigning the impacted staff to former or open roles within PRCS.

Current programs and services include Adult Basketball, Adult Softball, Summer Playgrounds, Youth Sports, Teen Late Night, 50 and Better Clubs, and the Climbing Wall. Several of these programs have been restored and largely made possible through community partnerships, launching community-led clubs, and cross-training staff among a variety of programs.

The floor was open for discussion and questions from commissioners. Program coordinators were thanked for their innovative approach to keeping these programs running. Brosius added that the ongoing variety of rental events helps support recreation programs.

Item 5: Director’s Report

Parks

- Construction is underway at Oakbrook Park. Thanks to recent nice weather, we are currently ahead of schedule! We are still expecting to wrap things up and host a community celebration in September.
- We are removing a vacant house on the East Biddle Lake property at 12700 SE Evergreen Highway. Demolition should be complete by the end of the month. Afterward, the property will be open as an undeveloped park.
- Construction on the new Elizabeth Austin playground at Fruit Valley Park will start in May and should be completed in August. The community building will be removed during playground construction.

Recreation

- Six current and former aquatics staff were recognized at the Vancouver Fire Department Awards ceremony on March 12. Their training helped save a woman's life during a 2024 medical emergency in the pool. Their preparedness and professionalism embody the high standards of safety and care that we strive for every day.
- We are working with three community partners to provide spring break camps for ages 4-14, March 31-April 4. Themes include a STEAM Lego camp, and volleyball, soccer and basketball sports camps. Learn more and register at www.cityofvancouver.us/camps.
- The AARP free tax aide services are as popular as ever at Marshall Community Center. In-person and online appointments are encouraged, and walk-in service is available.
- Save the date for summer registration! All our summer camps, classes and activities will be available to view on the website starting April 9. Vancouver residents can start signing up at 7 a.m. on April 16. Registration opens for non-residents on April 17.

Cultural Services

- The Vancouver Arts & Music Festival has been selected to receive the Spotlight Award for Program Excellence in Special Events from the Washington Recreation and Parks Association. This award means our colleagues across the state are recognizing Vancouver for our high-quality, innovative special events. Congratulations to Stacey Donovan and her team!
- You are invited to the dedication of Revealed, a new public art sculpture by artist Randy Walker. The dedication is happening Friday, April 4 at 3 p.m. at the Clark County Historical Museum, followed by a reception at Brickhouse. Revealed was commissioned by the City to honor the legacy of the Hidden Brick Company. The sculpture features steel bricks etched with words that reveal the history of Clark County. During the dedication, the Vancouver NAACP will add the first new word to the sculpture, symbolizing the ongoing evolution of our community's story.
- Save the date for Spruce the Couve on May 10. Volunteers will be planting flowers in Esther Short Park and working in teams to clean up downtown. This opportunity is family-friendly and great for teens – people of all ages are welcome. You can RSVP on the City's web calendar.

Item 6: Chair Report

Haygood encouraged commissioners to check out Nilo's frequent PRAC Friday email updates for the latest PRCS news and events.

Commissioners are also encouraged to participate on May 10th for the annual Spruce the Couve event, as this is a great way to connect with volunteers in the community.

Item 7: Evergreen School District Report

None presented.

Item 8: Vancouver Public School Report

None presented.

Item 9: Open Discussion & New Business

Striplin congratulated the directors and coordinators at MCC and FCC for doing an amazing job pulling through for the employees as well as the community. Robbins expressed his enthusiasm and excitement for the progress at Oakbrook Park, where he and his father visit often.

ADJOURNED

With no further business, the meeting was adjourned at 5:40 p.m.

Public Notice: Angela Brosius (FCC) hosted an optional tour of the Firstenburg Community Center building following the immediate adjournment of the March PRAC Meeting. In accordance with the Open Public Meetings Act (OPMA), there was no PRAC business conducted during this separate tour.

Park Impact Fees - 101

Recognizing rapid urbanization and the growing need for additional parks and natural areas, the City of Vancouver instituted **Park Impact Fees (PIF)** in 1995. The PIF program established level of service standards for neighborhood and community parks and urban natural areas, and rates for new residential development to serve future residents. The associated standards are adopted through the 2022 Vancouver Parks, Recreation & Cultural Services Comprehensive Plan. The **PIF Technical Document** includes the details of the program, including the fee schedule, district boundaries, calculation formula, methodology, indexing, and other specifics to simplify and facilitate program management and updates. Since the program's inception, the PIF program has supported acquisition and development of hundreds of acres of parks and natural areas. The following provides a general overview and terminology of the park impact fee program.

Do state and local statutes regulate impact fees?

State statute RCW 82.02 authorizes cities and counties to collect impact fees to ensure adequate facilities are available to serve **new growth** and development representing what is referred to as the **'proportionate share' or 'private share'**. Financing for such improvements must include other sources of public funds and not rely solely on impact fees. State law allows impact fees to be collected for and spent on public facilities including parks, roads, schools, and fire protection facilities that are part of an adopted **capital facilities plan**.

More specifically related to parks, this is defined to include publicly owned parks, open spaces and recreation facilities. Local regulations are codified in **Vancouver Municipal Code (VMC 20.915)**.

The statute states that impact fees be imposed for **system improvements** that reasonably related to and benefit new development, or **nexus**, and jurisdictions must provide a balance between impact fees and other sources of public funds. Park impact fees are reduced to account for other taxes and fees paid by new homeowners that support the same improvements. The reduction is referred to as a **cost adjustment factor** or **CAF**, currently estimated at 5% of the total cost, predominately from real estate excises tax allocations. In addition, general fund and grants provide supplemental funding for park system improvements.

Based on the statutory definition of **'system improvements'** and **'public facilities'**, impact fees cannot be used for improvements planned and designed to serve the residents of a particular project, nor operations and maintenance. Impact fees must be based on established standards, procedures, and criteria, and encumbered or spent within ten years of collection, or refunded to the current property owner. This timeline requirement is referred to as **concurrency**.

Who pays park impact fees?

For new development, impact fees are calculated at building permit application and collected from the developer or builder at permit issuance. Park impact fees are currently applied to residential land use only, with unique fees for single and multi-family units. At the discretion of the parks department, developers can dedicate land and/or park improvements in lieu of park impact fees if they qualify as a **park system improvement and** located consistent with system needs. The development will receive **PIF credits** that can be applied to future building permits within the applicable park impact fee district.

Full impact **fee waivers** (public fund subsidy required) and partial **fee exemptions** (not to exceed 80%, no public fund subsidy required) are available for qualifying low-income housing at the option of the local jurisdiction.

Fee waivers or reductions are also available through an administrative appeal for unusual circumstances where a reduced impact can be documented, such as memory care units. Fee exemptions and/or waivers are not available



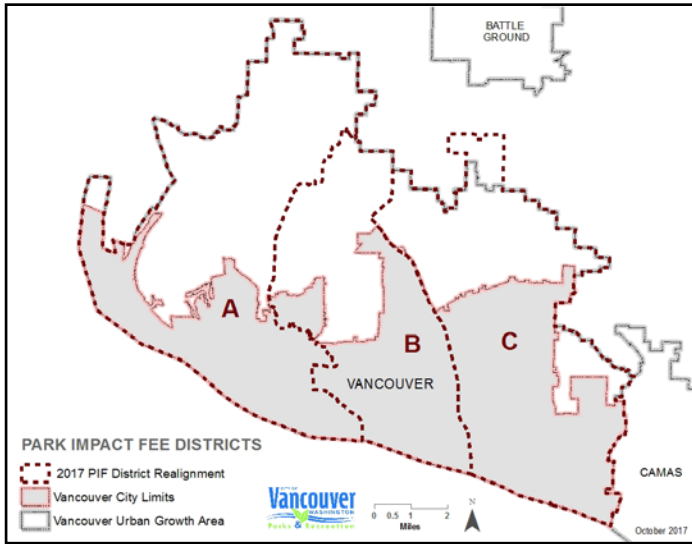
PIF enables proactive planning for acquisition and development of urban parks and natural areas with future developments.
- Ellsworth Springs Neighborhood Park

to low-income housing granted a property tax exemption (*VMC 3.22 VMC, Multi-Family Tax Abatement*). Schools and associated administrative and maintenance facilities are exempt from paying impact fees as well.

What are Park Impact Fee districts?

The Vancouver urban area (including the city limits and Vancouver Urban Growth Area) is divided into three **park impact fee districts (A, B, C)**, or 'service areas'. Fee calculation, park need, fee collection, fund accounting and concurrency requirements are managed separately for each PIF district. City of Vancouver rates are only applicable within city limits, but the PIF districts are intended to accommodate progressive annexations.

District boundaries were designed to generate sufficient revenues to enable a reasonable level of park acquisition and development within the concurrency period to serve those paying into the PIF program.



How are PIF rates calculated and updated?

RCWs require fees to be based on a formula or another method of calculating the cost to serve new development. Jurisdictions are obligated to meet deficiencies for the same public facilities to serve existing residents within a reasonable period using an equivalent calculation methodology (**public share deficit**).

The PIF Technical Document calculates PIF rates based on adopted standards and costs associated with land acquisition and development for Neighborhood and Community Parks and Natural Areas. The formula is designed to gauge the demand or impact on the park system based on the average number of persons per residence. Unique fees have been calculated for each park district to reflect variations in land values throughout the city, however, current rates are consistent across all districts.

Minor program amendments occurred over the years that followed the original adoption in 1995, with the only notable PIF rate update in 2004. Fees remained static for seventeen years until the current rate schedule was effective January 2021. In contrast, school and transportation impact fees are typically increased annually.

A cost of service analysis was completed in 2020 for a proposed PIF rate update reflecting the actual expense to purchase and develop neighborhood and community parks and natural areas.

Following public hearing review, City Council adopted a reduced six-year phasing schedule to mitigate the perceived impact of higher fees on affordable housing. Current rates are estimated to provide approximately 40% of the revenue needed to meet adopted standards, creating an increasing public share deficit.

Vancouver Municipal Code (VMC 20.915.100) states that the **Park Impact Fee Technical Document** can be revised periodically by City Council when financial analysis establishes the need for a major program update, but no less than every three years to evaluate the status of the funds collected and the projected need to serve future growth.

Fees to support other recreational amenities such as trails, recreation centers, civic plazas and other special facilities, including non-residential land uses to serve day-use populations are being explored. These amendments will be considered with the adoption and implementation of the 2025 Vancouver Comprehensive Plan.

Year	Park District	% Increase	SF	MF
2004-Dec. 1, 2020	A, B, C		2,255 (Avg)	1,648 (Avg)
January 1, 2021	A, B, C	25% Increase	\$2,819	\$2,060
January 1, 2022	A, B, C	25% Increase	\$3,523	\$2,575
January 1, 2023	A, B, C	35% Increase	\$4,757	\$3,476
January 1, 2024	A, B, C	10% Increase	\$5,232	\$3,824
January 1, 2025	A, B, C	10% Increase	\$5,756	\$4,206
January 1, 2026	A, B, C	6.5% Increase	\$6,130	\$4,480

Questions, Challenges and Opportunities

- Park deficits continue that accumulate due to insufficient revenue collection are added to the City of Vancouver's **public share liability**.
- Should the city **update the current PIF rate to reflect current costs** and implement the indexing process for regular fee adjustments?
- Should current **park standards or park types** be updated? What is most important to our residents and what is sustainable?
- Should the PIF program be amended to include **other types of recreational amenities**, such as trails or recreation centers, with the associated public share responsibility for existing system deficits?
- Should the PIF program **assess fees from new non-residential land uses** to serve day-time populations throughout the city or within certain geographic areas? What recreational assets should be funded through these fees?
- Should **private parks/facilities, schools, or other public lands** (with or without public access) be added to the park inventory? Doing so could dramatically adjust the current level of service. Do these lands serve the public in comparable ways and is there assurance of perpetual use?
- Is **maintenance funding** the greatest hurdle in addressing park need? During good economic times, we compete with developers for prime developable land, often paying top dollar or lose ideal sites. Whereas in times of recession there is a fear to look forward because of limited maintenance funding, and 'take care of what we have'. Yet, it is often the most favorable time to acquire properties at a more affordable and less competitive price, and interim maintenance costs are relatively insignificant when viewed over the long term.
- Fees are collected at the time of application for a *building permit*. This **process inherently puts Parks behind development** as a retrofit, limiting our ability to secure the most suitable locations for future parks or to maximize the service area by incorporating pedestrian interconnections.
- Inconsistencies between the City of Vancouver and Clark County fees and standards for the Vancouver **unincorporated urban growth area** could create shortfalls.
- The entire Urban Growth Area is the future City of Vancouver. Should the planning and acquisition of the future parks for this area be completed with joint agency cooperation?
- Recent legislation is pending that requires amendments to all impact fees to **reflect proportional impact based on residential square footage**.
- Park impact fees rate increases are repeatedly and uniquely challenged because of the alleged **impact to housing affordability**, whereas other development and impact fees are not seen as having comparable influence on development housing costs. Is this because access to greenspace is not considered an essential service? Other explanations?
- With the rising frequency of **partial impact fee waivers for low income housing** that are not subsidized with public funds, the city has an increasing risk of creating high density areas with substandard infrastructure.



Park Impact Fees 101

Monica Tubberville

Senior Planner, Parks, Recreation & Cultural Services

Parks & Recreation Advisory Commission

April 16, 2025



Agenda

- Historical Context
- Legislative Purpose & Requirements
- Limitations & Challenges
- Opportunities & Next Steps
- Questions & Discussion



Historical Context

Vancouver Park System

- **1853** - Esther Short Park Donation
5 acres
- **1985** - 250 acres
- **2025** - 1,775 acres (City Ownership)





Historical Context

Funding Sources

- General Fund
- Donations
- Grants
- Conservation Futures
- Real Estate Excise Tax
- Partnerships

Park Impact Fees

Clark County - Adopted 1990
Vancouver - Adopted 1995



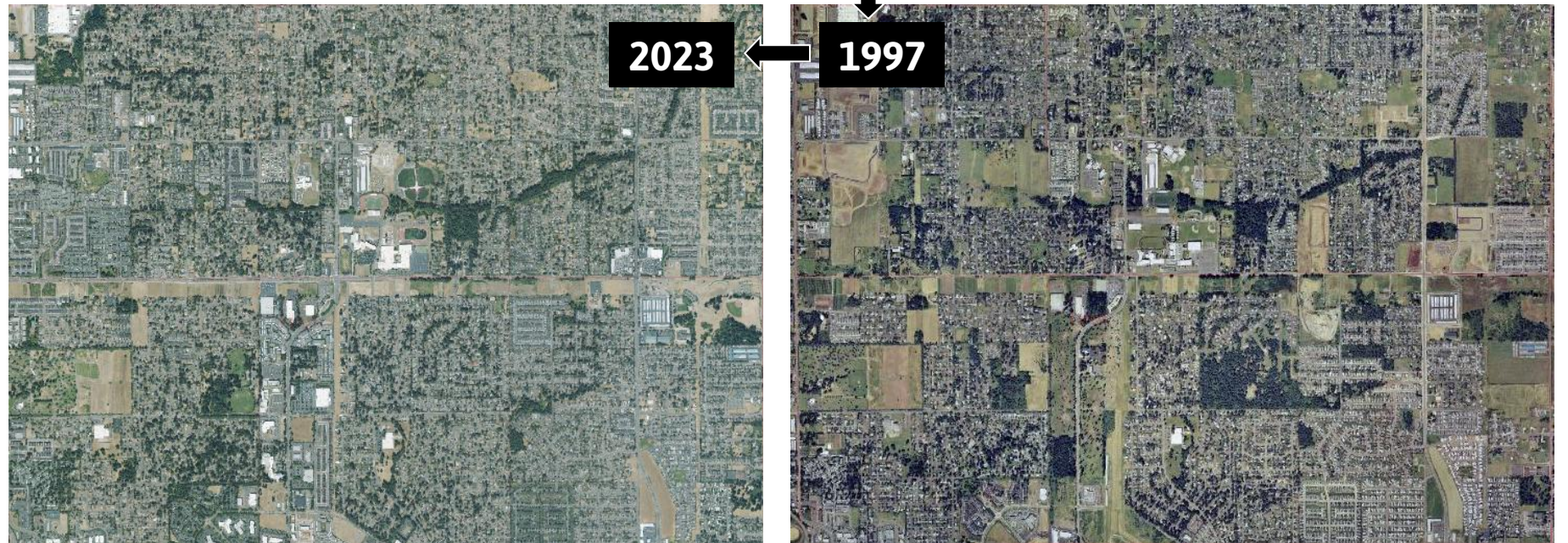
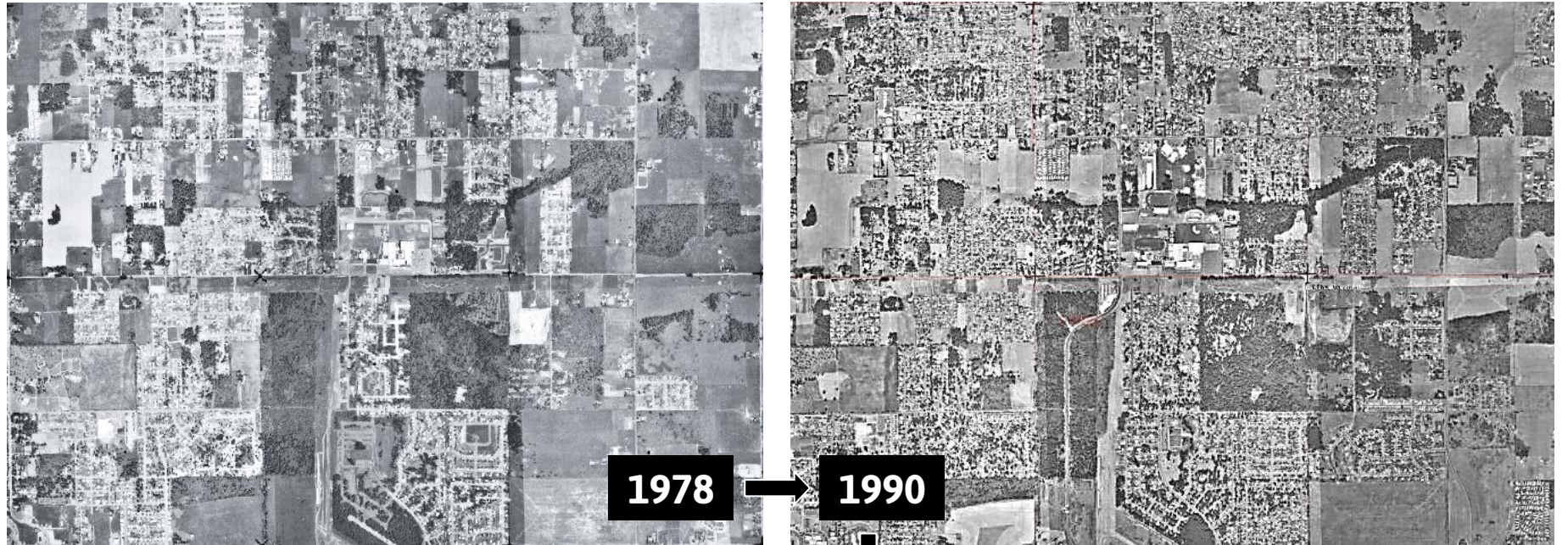
45-Year Snapshot

1978 - 2023
Cascade Park Area

1982
I-205 Bridge

1990
Growth Mgmt. Act &
Impact Fee RCWs

1997
Cascade Park Annexation
&
Vancouver-Clark
Interlocal Agreement



Legislative Purpose & Requirements

Public Infrastructure for New Growth

- New development supports proportionate share:
 - ✓ Streets & Roads
 - ✓ Schools
 - ✓ Parks, Open Space & Rec. Facilities
 - Fire Protection

System Improvements

- Designed to serve the community rather than a project.

Nexus

- Fees reasonably relate to & benefit NEW development.



Legislative Purpose & Requirements

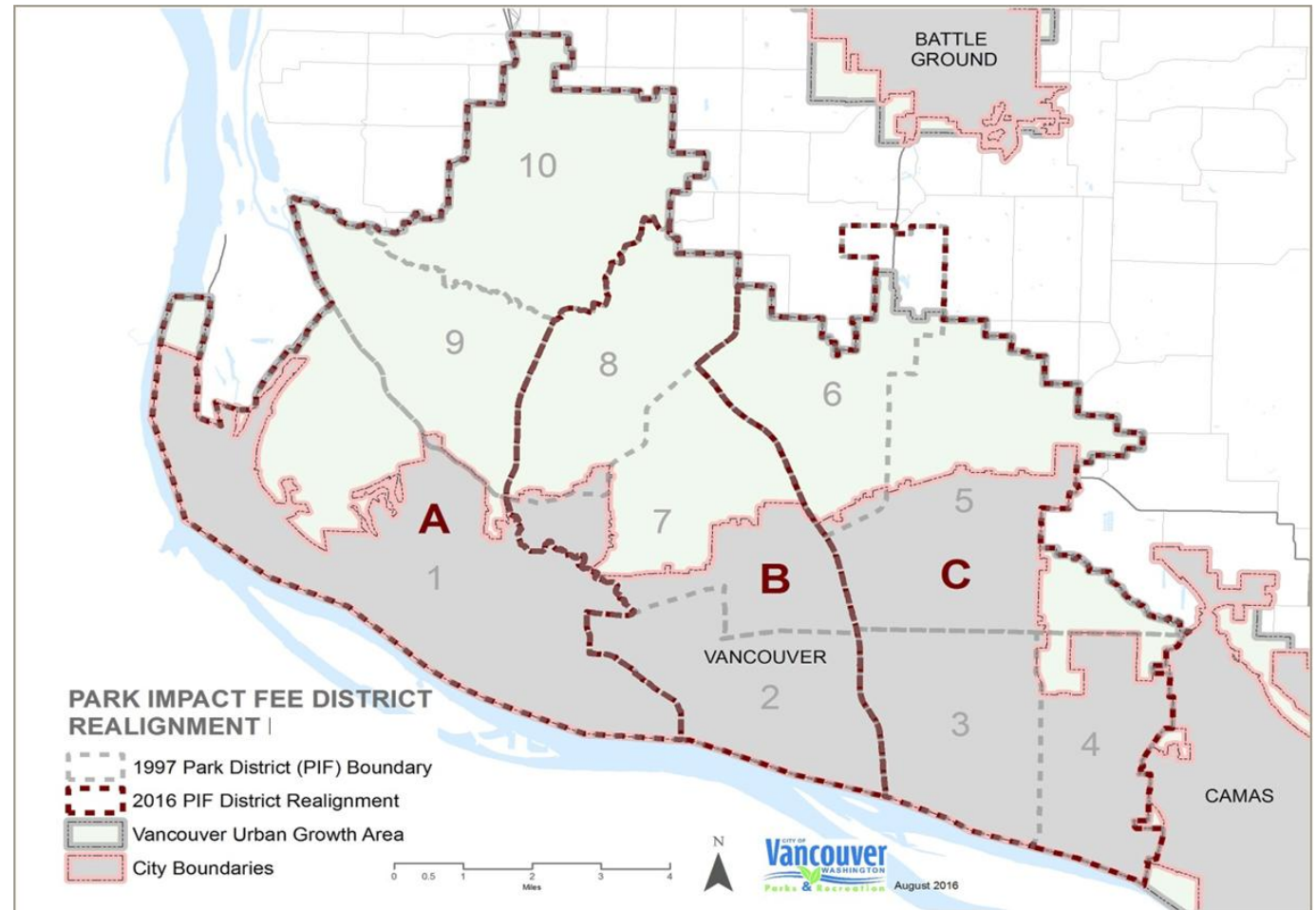
Adopted Comprehensive Plan & Capital Facilities Plan

- **Facility Standards**
 - Vancouver PIF supports Neighborhood & Community Parks & Natural Areas
 - Acquisition - 6 acres / 1,000 residents
 - Development - 4.25 acres/1,000
 - Geographic Distribution
- **Established Procedures & Criteria**
 - Codified in Vancouver Municipal Code
 - Detailed in PIF Technical Doc.
- **Adopted Service Areas**



PIF Service Areas

- **'Service Area'** = PIF Districts
- **Original Districts 1 -10**
 - Joint City - County Interlocal Agreement
 - (1997-2014)
- **A, B, C** - Adopted in 2016
 - More functional to meet concurrency requirements
 - Accommodates future annexations



Legislative Purpose & Requirements

Fee Schedule

- Based on formula or methodology
- PIF applicable to Residential Use Only
 - Single Family
 - Multi-Family

Balanced with other Funding Sources (Public Share)

Fund Management & Concurrency

- Managed by Service Area
- 10-Years to Commit, Expend, or Refund



Fee Calculation

**Park Impact Fee = (Land Acquisition Costs + Development Costs) X Standard
minus Cost Adjustment Factor**

Land Acquisition Costs:

Neighborhood & Community Parks,
& Natural Areas

- Appraisal(s)
- Studies
- Level One Improvements
(safe accessible greenspace)
- Master Plan
- *Staff Time ?*

Development Costs:

Neighborhood & Community Parks

- Studies
- Outreach
- Design & Permitting
- Development
- *Staff Time ?*



PIF Rate Schedule

- **Current rates**
Adopted 2021
- **Phased implementation**
2021 - 2026
- **Consumer Price Indexing (CPI)**
Effective 2027
- **Residential Only**
Single & Multi-Family (Average residents per unit type)
- **Calculated** at Building Permit Application
Paid at Building Permit Issuance (Vested for 1-year)

Year	Park District	% Increase	SF	MF
2004-Dec. 1, 2020	A, B, C		2,255 (Avg)	1,648 (Avg)
January 1, 2021	A, B, C	25% Increase	\$2,819	\$2,060
January 1, 2022	A, B, C	25% Increase	\$3,523	\$2,575
January 1, 2023	A, B, C	35% Increase	\$4,757	\$3,476
January 1, 2024	A, B, C	10% Increase	\$5,232	\$3,824
January 1, 2025	A, B, C	10% Increase	\$5,756	\$4,206
January 1, 2026	A, B, C	6.5% Increase	\$6,130	\$4,480



Legislative Purpose & Requirements

Other Provisions

- **Existing Park Deficit**
Jurisdiction must fund within a *'reasonable time'*
- **Fee Exemptions/Waivers** for qualifying Low-Income Housing
- Fee **Adjustments** for Unusual Circumstances
- **Credits** for System Improvements from Private Development



Limitations & Challenges

- Limited in scope - does not currently apply to other park assets, or non-residential.
- Cannot be used for replacement, repairs, maintenance or programming.
- Inherently behind development, rather than ahead of it for best locations & interconnection.
- Impact fee waivers & exemptions for low-income housing are not funded.
- Current rates do not fund adopted park standards.
- Limited committed resources to address park system deficits.





Opportunities & Next Steps

- Non-Residential PIF to fund:
 - Regional Trails
 - Civic Plazas, Linear Parks
 - Special Use Facilities
- Update rates to reflect current acquisition & development costs.
- New Legislation - Amend rates to reflect proportional impact.
- Amendments to align with adoption of Vancouver Comprehensive Plan December 2025



Questions & Discussion





CITY OF
Vancouver
WASHINGTON

Summer Recreation and Special Events

Angela Brosius
Firstenburg Director

Andy Meade
Marshall Director

Erik Miletich
Special Events Recreation Coordinator





Recreation Update

- Camps
- Community centers
- Recreation activities
- Challenges and innovations
- Questions and discussion



Day Camps

Full-day camp programs operated by PRCS staff

- Scholarships and payment plans available
- Youth Day Camps at Marshall & Fircrest Schools with new aftercare option (Ages 6-10)
- Access to Recreation Camp at Ogden Elementary (Ages 13+)



Summer Playgrounds Camps

Free, outdoor camps operated by PRCS staff



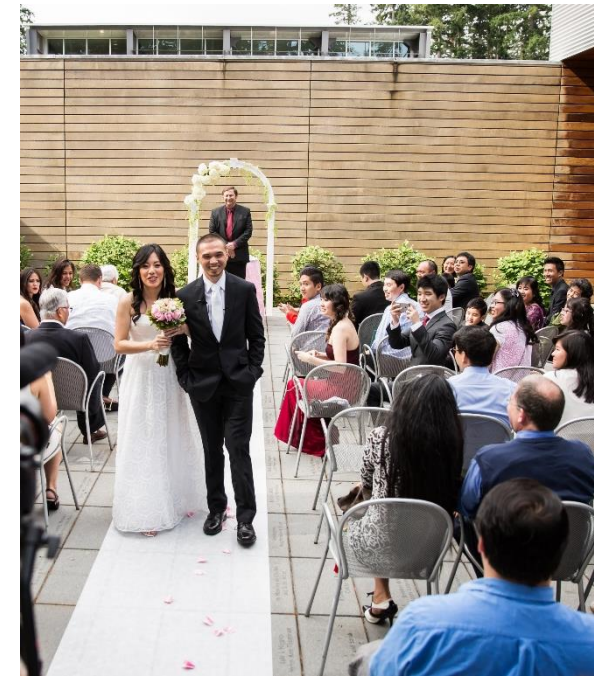
- Hosted at Crestline and Hough Elementary Schools, and Evergreen Park
- No cost to people who live within specified school boundaries, registration required
- Lunch provided by USDA Summer Meal Program
- Camps open to ages 6-11; lunch is served to ages 18 and under
- With support from the McClaskey Family Foundation



Community Centers

Our facilities are important resources in the community

- Ongoing memberships
- Drop-in visitors
- Summer Youth Pass
- Pool use
- Graduation parties and private rentals



Summer Activities, Classes and Leagues

General Activities

- Family Pickleball
- Youth Dance
- Rock Climbing
- Pottery
- Softball
- Swim Lessons

Access to Recreation

- Arts and Crafts
- Pottery
- Aquatics
- Fun and Fitness
- Yoga and Movement
- Hangout Hour
- Social Dances
- Monday FunNites
- Bowling
- New classes at Firstenburg

Senior Activities

- Hikes
- Social Clubs
- Social Dances
- Exercise classes
- Enrichment classes



Addressing Challenges with Innovation

Interest in summer programs will exceed what we are able to offer

Priority registration for people who live within Vancouver city limits

Partner with community providers to expand camp offerings:

- Vancouver Volcanoes
- UK International Soccer
- Soccer Shots
- Skyhawks Sports
- USTA PNW RecTennis
- Jordan Kent's Just Kids Skills Camps
- PAL Basketball Camp
- Journey to STEAM Lego Camps
- Chess Wizards
- Youth Sports Garden



Recreation Discussion





Special Events Update

- Meet the team
- City sponsored events
- City partnered events
- Questions and discussion



Meet the Special Events Team

This team is part of the Cultural Services Division of PRCS

Stacey Donovan

Cultural Services Manager

Erik Miletich

Special Events Coordinator

Kirstin Hull

Cultural Services Support Specialist

Meg Johnson

Special Events Specialist

Sean Douglas

Special Events Permitting Manager

Teresa Norval

Special Events Permit Specialist



Summer Concerts

Waterfront Concert Series

- Thursdays from 6:30 to 8:30 p.m.
- July 3 - 24
- Waterfront Park

Sunday Sounds Concert Series

- Sundays from 6 to 8 p.m.
- July 13 - Aug. 17
- Columbia Tech Center Park



Summer Movies

Fridays at dusk in parks across the city, August 1 – 22

- Coco at Esther Short Park
- Moana 2 at Bagley Community Park
- E.T. at Fort Vancouver Parade Grounds
- Barbie (ASL) at Columbia Tech Center Park



Cultural Event Partnerships

Sharing event planning leadership to community partners

**Juneteenth with
Odyssey World International**
Saturday, June 14 | Esther Short Park

**Children's Festival with
Columbia Play Project**
Saturday, June 21 | Waterfront Park

**Vancouver Arts & Music Festival with
Vancouver Symphony Orchestra**
July 31 – August 4 | Esther Short Park

**Día de Muertos with
Vancouver Ballet Folklórico**
Oct. 18 | Esther Short Park

**Holiday Tree Lighting with
Rotary International**
Friday, Nov. 28 | Esther Short Park

**Menorah Lighting with
Chabad of Clark County**
Sunday, Dec. 14 | Location TBD



Special Events Discussion





Share Summer Job Opportunities

Our staff enjoy active, meaningful work that serves the community and develops job skills. (Ages 16+)

- Camp Staff
- Aquatics Staff
- Summer Event Staff
- Apply at cityofvancouver.us/RecJobs

