



## Parks & Recreation Advisory Commission Meeting Agenda

June 18, 2025  
4:30 PM

### City Hall

Aspen Room  
415 W. 6th Street  
Vancouver, WA  
Online Access: [Teams Link](#)

- 1. Call to Order and Roll Call - 4:30pm**
- 2. Approval of Minutes - 4:35pm**
  - a. Approval of the minutes from the 4/16/25 PRAC meeting
- 3. Community Forum - 4:37pm**

To provide public testimony, please see instructions below.
- 4. Workshop - 4:40pm**
  - a. Our Vancouver Comprehensive Plan Update
  - b. Charter for Countywide Sustainable Parks Funding
  - c. Recreation Summer Registration Updates
- 5. Commission and Staff Reports - 5:52pm**
  - a. Department Director
  - b. Commission Chair
  - c. Evergreen School District
  - d. Vancouver Public School
  - e. Parks Foundation
- 6. Open Discussion & New Business - 5:57pm**

## Parks & Recreation Advisory Commission

### Members

Jayne Cavaness, **President**  
Angilo Fletcher, **Vice President**

Jeremy Robbins  
Jenny Thompson  
Stephen Wille  
James Luce  
Valerie Striplin  
AJ Panter, VPS  
Cale Piland, EPS Parks Foundation  
(vacant)

**Parks, Recreation and  
Cultural Services Department**  
P.O. Box 1995 Vancouver, WA  
98668  
360-487-8311  
TTY: 711  
[cityofvancouver.us](http://cityofvancouver.us)

---

### Community Forum Instructions

The public is invited to speak regarding any issue. Members of the public testifying are asked to limit testimony to three minutes. There are three ways to provide comments:

1. In Writing: Public comments can be submitted in writing (name, address, contact information and comments) via email to [parksrecculture@cityofvancouver.us](mailto:parksrecculture@cityofvancouver.us) by 5 pm on the day before the meeting.
2. Remotely: Pre-register by phone at 360-487-8311 or email [parksrecculture@cityofvancouver.us](mailto:parksrecculture@cityofvancouver.us) by 5pm the day before the meeting
3. In Person: Pre-register by phone at 360-487-8311 or email [parksrecculture@cityofvancouver.us](mailto:parksrecculture@cityofvancouver.us) by 5pm the day before the meeting or fill out a Public Comment form in person prior to the start of the Community Communications portion of the meeting

City Hall is served by C-TRAN. Route information and schedules are available online at [www.c-tran.com](http://www.c-tran.com). You also may reach C-TRAN at (360) 695-0123 for more information on times, fares, and routes.

Anyone needing language interpretation services or accommodations with a disability at a Vancouver City Council meeting may contact the City Manager's staff at (360) 487-8600 (RELAY: 711). Assistive listening devices and live Closed Captioning are available for the deaf, hard of hearing and general public use. Please notify a staff person if you wish to use one of the devices. Every attempt at reasonable accommodation will be made. To request this agenda in another format, please also contact the phone numbers listed above.

## Meeting Minutes

Wednesday, April 16, 2025

4:30 p.m.

Vancouver City Hall

Aspen Room

### Commissioners Present:

Cavaness, Thompson, Luce, Wille, Robbins, Striplin, and Fletcher.

### Commissioners Absent:

Piland, and Panter

### Staff Present:

Perlick, Brosius, Tubberville, Heath, Miletich, Johnson, Baynard-Cooke, Nilo, Stokke, Hull, White, Guzman, Burton, Snyder, Gutierrez, Meade, and Nilo.

### Guests: None

### Item 1: Call to Order

Vice Chair Fletcher called the Parks and Recreation Advisory Commission (PRAC) regular meeting to order at 4:31 p.m. in the Aspen Room at Vancouver City Hall and online via Microsoft Teams. Commissioners Piland and Panter were absent.

### Item 2: Approval of Minutes

PRAC approved March 19, 2025, meeting minutes by consensus with no changes.

### Item 3: Public Comment

None presented.

## Members

**Jayne Cavaness**

President

**Angilo Fletcher**

Vice President

Jeremy Robbins

Jenny Thompson

Stephen Wille

Valerie Striplin

James Luce

AJ Panter, VPS

Cale Piland, EPS

Vacant, Parks Foundation

**Parks, Recreation and  
Cultural Services  
Department**

P.O. Box 1995  
Vancouver, WA 98668  
360-487-8311  
TTY: 711  
cityofvancouver.us

#### **Item 4: Park Impact Fees 101**

Monica Tubberville (Senior Planner, PRCS) introduced the Park Impact Fee (PIF) program, and provided an additional PIF 101 Fact Sheet for additional context. This is also available online in the April PRAC Agenda Packet.

Tubberville provided some historical context on the Vancouver Parks System, which began in 1853 with the 5-acre donation of Esther Short Park. By 1985, the system had increased to 250 acres. Today in 2025, we have 1,775 acres under City ownership.

Funding sources include the General Fund, donations, grants, Conservation Futures, Real Estate Excise Tax, and partnerships. The PIF program was adopted by Clark County in 1990 and then adopted by Vancouver in 1995.

Legislative purposes and requirements include public infrastructure for new growth. New development supports a proportionate share among streets and roads, schools, parks, open space and recreational facilities, and fire protection. System improvements are designed to serve the community rather than a project. Guiding elements from the Adopted Comprehensive Plan and Capital Facilities Plan also include facility standards, established procedures and code criteria, and adopted service areas.

Tubberville shared an overview of the service area PIF Districts A, B, and C in Vancouver, in addition to the Fee schedule and fund management (managed by service area). Park Impact Fees are calculated by land acquisition costs + development costs X standard minus cost adjustment factor.

The current PIF rate schedule was adopted in 2021, to begin phased implementation in 2021-2026. Consumer Priced Indexing (CPI) will be affected in 2027.

Other provisions include existing park deficits, fee exemptions/waivers for qualifying low-income housing, and credits for system improvements from private development.

PIF has some limitations and challenges. The program can be limited in scope and cannot be used for replacement, repairs, maintenance, or programming. PIF is inherently behind development, rather than ahead of it for best locations and interconnection. Impact fee waivers and exemptions for low-income housing are not funded. Current rates do not fund adopted park standards, and there are limited resources committed to addressing park system deficits.

Opportunities might include non-residential PIF to fund regional trails, civic plazas, linear parks, and special-use facilities. Next steps are to update rates to reflect the current acquisition and development costs, amend rates to reflect proportional impacts in new legislation, and make amendments to align with the adoption of the Vancouver Comprehensive Plan in December 2025.

The floor opened for questions and discussion among commissioners. Robbins clarified the current PIF rate on the schedule for 2025. Wille inquired more about district service areas and asked if there is a size limit of ideal properties for developing parks. Tubberville answered that the ideal minimal acquisition range is 3-5 acres, but we have parks as small as a half-acre.

Wille inquired about a right-of-way as a park opportunity, and Tubberville confirmed that there could be green spaces. Luce asked about impacts on housing affordability, and it was confirmed that there are standards on what qualifies as affordable housing. Striplin shared that she appreciates the consideration of these challenges of accessible green space as listed as essential. Cavaness inquired about the challenge of limited open space, and how we can forecast needs for acquiring open space going forward.

Perlick shared that next month in the Comprehensive Plan Presentation, we will see a list of policy statements that will highlight the direction of this work.

### **Item 5: Summer Recreation and Special Events**

Angela Brosius (FCC Director), and Andy Meade (MCC Director) shared updates on Summer Recreation Programming and Erik Miletich (Special Events Recreation Coordinator) shared updates on Summer Events.

Day Camps: full-day camps operated by PRCS staff. Scholarships and payment plans are available with Youth Day Camps (Marshall and Fircrest Schools) with new aftercare options for ages 6-10. Access to Recreation Camp will be held at Ogden Elementary for ages 13+

Summer Playgrounds Camps: free, outdoor camps operated by PRCS staff. These will be hosted at Crestline and Hough Elementary Schools, and Evergreen Park at no cost to people who live within specified school boundaries (registration required). Lunch will be provided by the USDA Summer Meal Program for ages 18 and under with support from the McClaskey Family Foundation. Camps are open to children ages 6-11.

Community Centers are important resources to our community, with ongoing memberships, drop-ins, Summer Youth Pass, pool use, graduation parties, and private rentals.

A list of summer activities, classes, and leagues was shared for General Activities, Access to Recreation, and Senior Activities.

Our staff are addressing challenges, as interest in summer programs will exceed what we are able to offer. Priority registration will be given to people who live within Vancouver city limits. We have also partnered with several community providers to expand camp offerings.

The floor opened for questions and discussion among commissioners. Commissioners were impressed by the FCC tour last month and expressed gratitude for their work. NASA Globe Goes to Camp was recommended as a potential outdoor educational partner for camps.

Erik Miletich was introduced and shared an overview of the Cultural Services Division of PRCS, which includes:

- Cultural Services Manager
- Cultural Services Support Specialist
- Special Events Coordinator
- Special Events Specialist
- Special Events Permitting Manager
- Special Events Permit Specialist

The Summer Concert Series for the Waterfront will be held on Thursdays from 6:30 to 8:30pm, July 3-24 at Waterfront Park. The Sunday Sounds Concert Series will be held on Sundays from 6-8pm, July 13 – August 17 at Columbia Tech Center Park. Miletich noted the reduction in the Special Events budget resulting in shorter concert series this year, and some innovative ways to make events season more sustainable, including scheduling changes and community sponsorships.

Summer Movies will be on Fridays at dusk in parks across the City, August 1-22. The City has hosted 20+ years of movies in the parks. More details will be released to the public in May.

Cultural Event Partnerships include:

- Juneteenth with Odyssey World International (6/14 at Esther Short Park)
- Children’s Festival with Columbia Play Project (4/21 at Waterfront Park)
- Vancouver Arts & Music Festival with Vancouver Symphony Orchestra (7/31 – 8/4 at Esther Short)
- Dia de Muertos with Vancouver Ballet Folklorico (10/18 at Esther Short Park)
- Holiday Tree Lighting with Rotary International (11/28 at Esther Short Park)
- Menorah Lighting with Chabad of Clark County (12/14, location TBD)

The floor opened for questions and discussion among commissioners.

Commissioners were encouraged to share summer job opportunities with our camp staff, aquatics staff, and summer event staff. Apply at [cityofvancouver.us/RecJobs](http://cityofvancouver.us/RecJobs).

#### **Item 6: Vancouver as a Bee City USA**

Hailey Heath has announced that Vancouver has been designated as a Bee City USA. Heath thanked the pollinator subcommittee for their advocacy. We will soon see some signage to support the affiliation, and we are working to host our second annual pollinator festival. Perlick also highlighted the Council’s enthusiastic support for this designation. Cavaness thanked the staff and committee members for their support of this initiative.

With next week as National Volunteer Appreciation Week, staff expressed gratitude to commissioners for their work in the community.

#### **Item 7: Director’s Report**

Parks

- As you may have seen in the Columbian, the construction bid has been approved for the new Elizabeth Austin playground at Fruit Valley Park. The pre-construction meetings are underway and we expect to start construction in May and with completion in late summer. The community building will also be removed by General Services in May.
- Parking fees are being reinstated at Wintler Community Park. From May 1 - Sept. 30, a daily parking fee of \$6 will be required for all vehicles parked in the lot. Fees will help us better manage traffic and ensure that emergency vehicles always have safe access to the park. Frequent visitors can purchase a \$50 annual parking pass at Firstenburg or Marshall community centers.
- Park restrooms are open at 10 sites. These public restrooms are open seasonally and are locked while parks are closed. If someone wants to report an issue with a restroom, they can do it through the Public Works Service Request online, or by calling 360-487-8177.

Recreation

- Summer registration is open for Vancouver residents. It will open to everyone else tomorrow at 7 a.m. Despite recent fee increases, I’m happy to report that spots are filling quickly.
- Big congratulations to our sports team for being selected as one of 52 recreation agencies nationwide to participate in the prestigious Million Coaches Challenge. Through this exciting initiative, we’ll be receiving top-tier, no-cost training from the NRPA and leading national training organizations.

## Cultural Services

- On Saturday you are invited to join the Nez Perce Tribe at their annual memorial to remember Chief Redheart's band with singing, a drum circle, and recognition of veterans. The event is from 10 a.m. to noon at Fort Vancouver and it is open to everyone in the community. Information is on the City web calendar.
- Save the date for First Friday at the arts hub on May 2 from 5 to 8 p.m. The focus will be on fiber arts with demonstrations and displays of weaving, lace making, spinning, felting, basketry, and more.
- And remember to sign up for Spruce the Couve on May 10. Volunteers will be planting flowers in Esther Short Park and working in teams to clean up downtown. This opportunity is family-friendly and great for teens – people of all ages are welcome. You can RSVP on the City's web calendar.

### **Item 8: Chair Report**

Cavaness and Perlick announced Melody Burton as the Tributary Award Winner for the Parks Foundation. Commissioners were also encouraged to attend the PFCC annual luncheon on May 8.

Cavaness also encouraged commissioners to volunteer at and attend the PRCS summer events.

### **Item 9: Evergreen School District Report**

None presented.

### **Item 10: Vancouver Public School Report**

None presented.

### **Item 11: Open Discussion & New Business**

No updates.

## **ADJOURNED**

With no further business, the meeting was adjourned at 6:00 p.m.

Public Notice: The May PRAC meeting will be held offsite at Marshall Community Center next month.

# OUR VANCOUVER

OUR FUTURE 2045

## Potential Impacts of Alternatives for Vancouver's Growth

Rebecca Kennedy (she/her), Deputy Director, Community Development

Meredith Herbst (she/her), Associate Planner, Community Development

Parks and Recreation Advisory Commission | June 18, 2025

# Agenda

- **Recap:**
  - ➔ Comprehensive Plan
  - ➔ Alternatives for Vancouver's growth and development
- **Understanding Potential Impacts**
- **Potential Impacts: Parks and Recreation**
  - ➔ Overview
  - ➔ Potential impacts
  - ➔ Ways to lower impacts
- **Next steps and Discussion**



# Recap

Vancouver's Comprehensive Plan and  
Alternatives for Growth and Development

# OUR VANCOUVER Comprehensive Plan

- A guide for the city's growth and development over the next **20 years** (2025-2045).

	2024	Growth	2045 Targets
Population	~200,000	+ 81,000	~281,000
Housing Units	~86,000	+ 38,000	~124,000
Jobs	~100,000	+ 43,100	~143,100

Vancouver is an equitable and prosperous community, which ensures that all residents, businesses and organizations benefit from the growth and advancement we make together.

Vancouver will be recognized for our quality of life, as evidenced by affordable housing in vibrant, safe and walkable neighborhoods, access to jobs and economic opportunity for all, and leading-edge efforts to address climate change.

# The Process



## Learn about our community

- History
- Existing conditions
- Visioning



## Develop alternatives

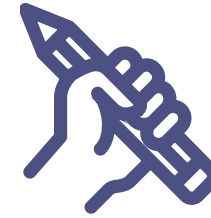
- Analyze data
- Place Types
- Community mapping activities

We are here.



## Understand potential impacts

- Draft EIS
- **Public comment period**



## Refine map, policies, & code

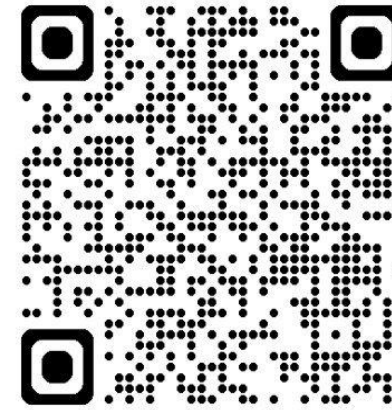
- Update based on EIS and feedback
- **Draft plan, code, and map for public comment**



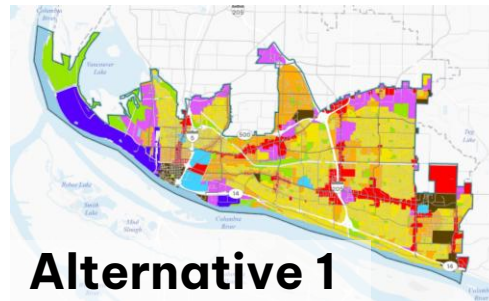
## Adopt plan and code

- Final EIS
- Adoption of plan, map, and code

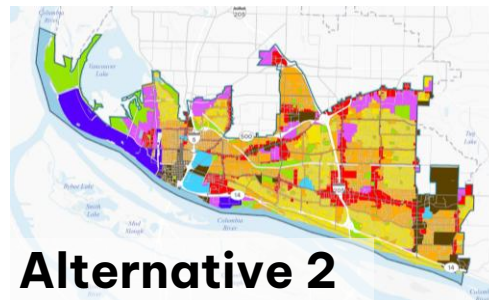
# About the Maps



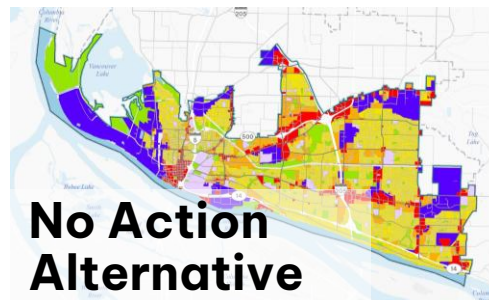
City priorities  
State requirements  
Community engagement  
Existing and anticipated future conditions



**Alternative 1**

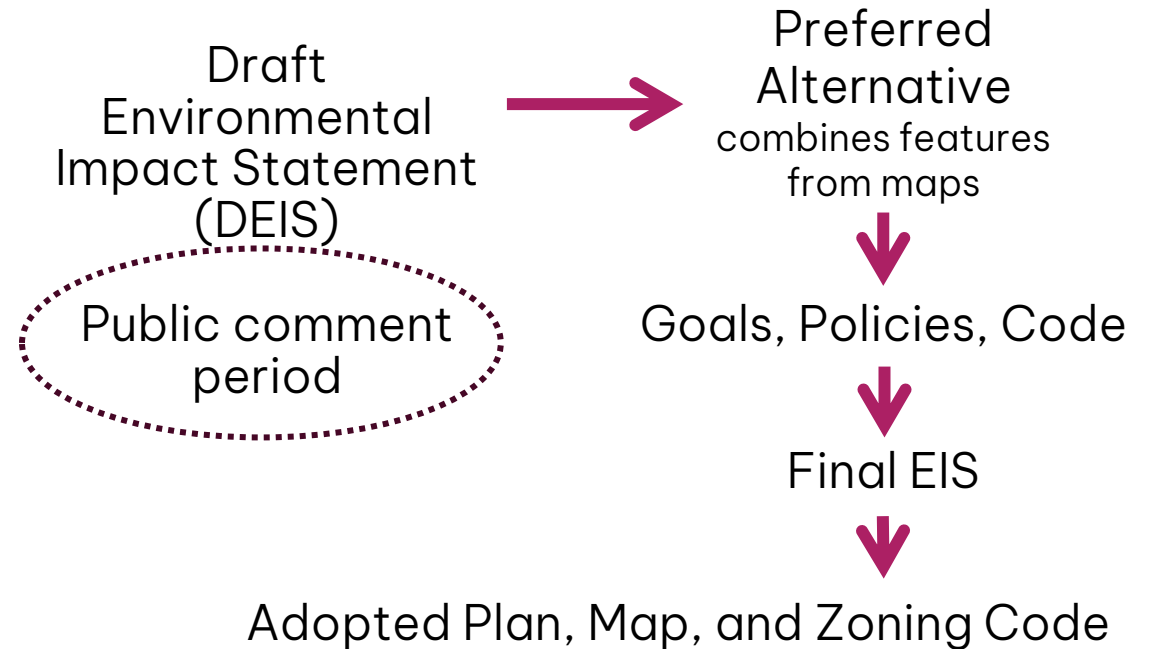


**Alternative 2**



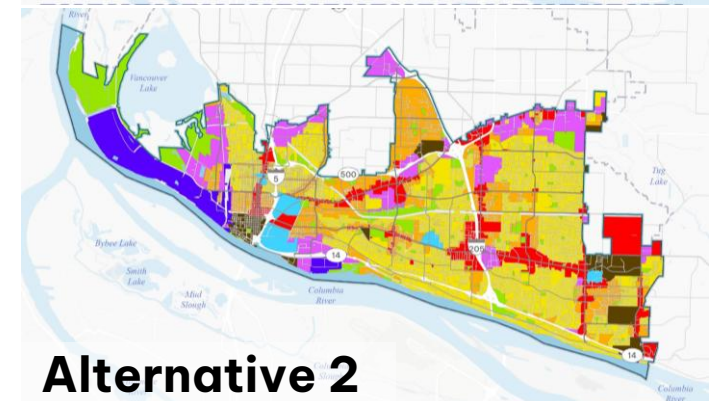
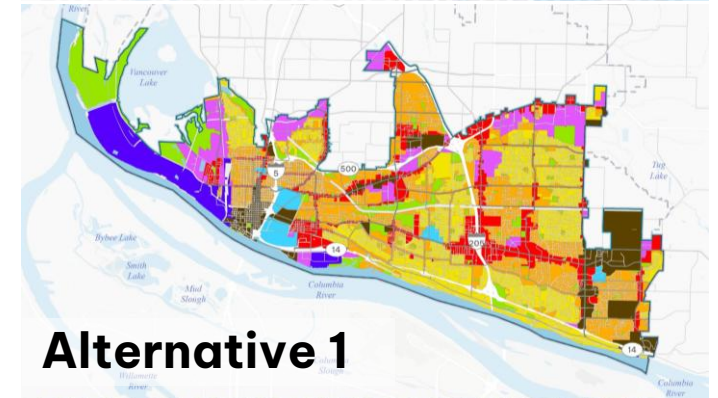
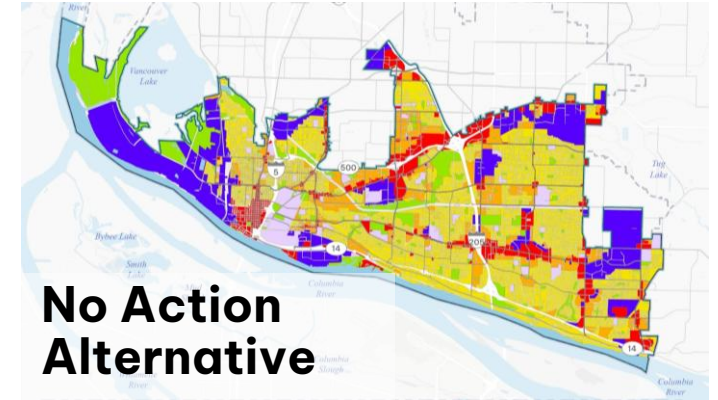
**No Action Alternative**

Existing plan + State requirements only



# Comparison of Maps

- No Action Alternative
  - ➔ Current adopted City comprehensive plan and regulations, plus automatic State requirements
  - ➔ Does **not** meet City's 2045 targets for housing and jobs
- Alternative 1
  - ➔ Exceeds housing/jobs targets
  - ➔ Allows more density and mixing of land uses than Current Map, but less than B
  - ➔ More Low-Scale and Industrial/Employment than B.
- Alternative 2
  - ➔ Allows the most housing and jobs (exceeds targets)
  - ➔ Allows density and mixing of uses in more areas than Current Map or Possibility A
  - ➔ Most amount of Regional Activity Center, Medium-Scale, and Mixed-Use



# Understanding Potential Impacts

The environmental impact statement  
process for the comprehensive plan

# Environmental Impact Statement

- The City is studying how each alternative could impact different aspects of the built and natural environment.
- A report, called a draft environmental impact statement (DEIS), will be published that describes these potential impacts.
- Describes **general** impacts, not super specific, because plan is high-level policy
- Required by State

- Land and shoreline use
- Housing
- Aesthetics (light and glare)
- Historic and cultural preservation
- Transportation
- Noise
- Public services and utilities (emergency services, water, sewer, schools, **parks and recreation**)
- Air quality, greenhouse gases, and climate
- Earth (geological hazard areas, soils, topography)
- Water resources
- Plants and animals

# Upcoming Comment Period

- **Once report is published in July, the public will have the opportunity to comment on it.**
  - Comments will help create a final map (“preferred alternative”) for Vancouver.
  - Can comment on alternatives, potential impacts, etc.
- Online comment form, plus email, mail, and voicemail
- Updated online StoryMap, with information from DEIS
- Public meetings
  - Wednesday, July 30 from 4p-7p at Firstenburg
  - Saturday, August 9 from 11a-2p at City Hall
- Virtual sessions
  - Tuesday, July 22 from 4p-6p via Zoom
  - Monday, August 4 from 11a-1p via Zoom

## Staff will use

- information in the DEIS
- **comments on the DEIS and other feedback from engagement**
- City policy priorities (including equity, climate, and safety)
- direction from City Council

to draft a preferred alternative that **combines the best features** from the different alternatives.

# Potential Impacts: Parks and Recreation

Preliminary overview of draft  
environmental impact statement findings

# Overview

- Methodology
  - ➔ Reviewed City of Vancouver Parks, Recreation, and Cultural Services Comprehensive Plan, among other documents.
  - ➔ Analyzed change in demand for parks and recreation.
- Decision makers use the information to help decide how the future land use map for the City looks and what types of investments will need to be made to serve growth.
- High-level preview to help the Parks and Recreation Advisory Commission and members of the public understand the EIS process and prepare to comment on the DEIS during comment period.

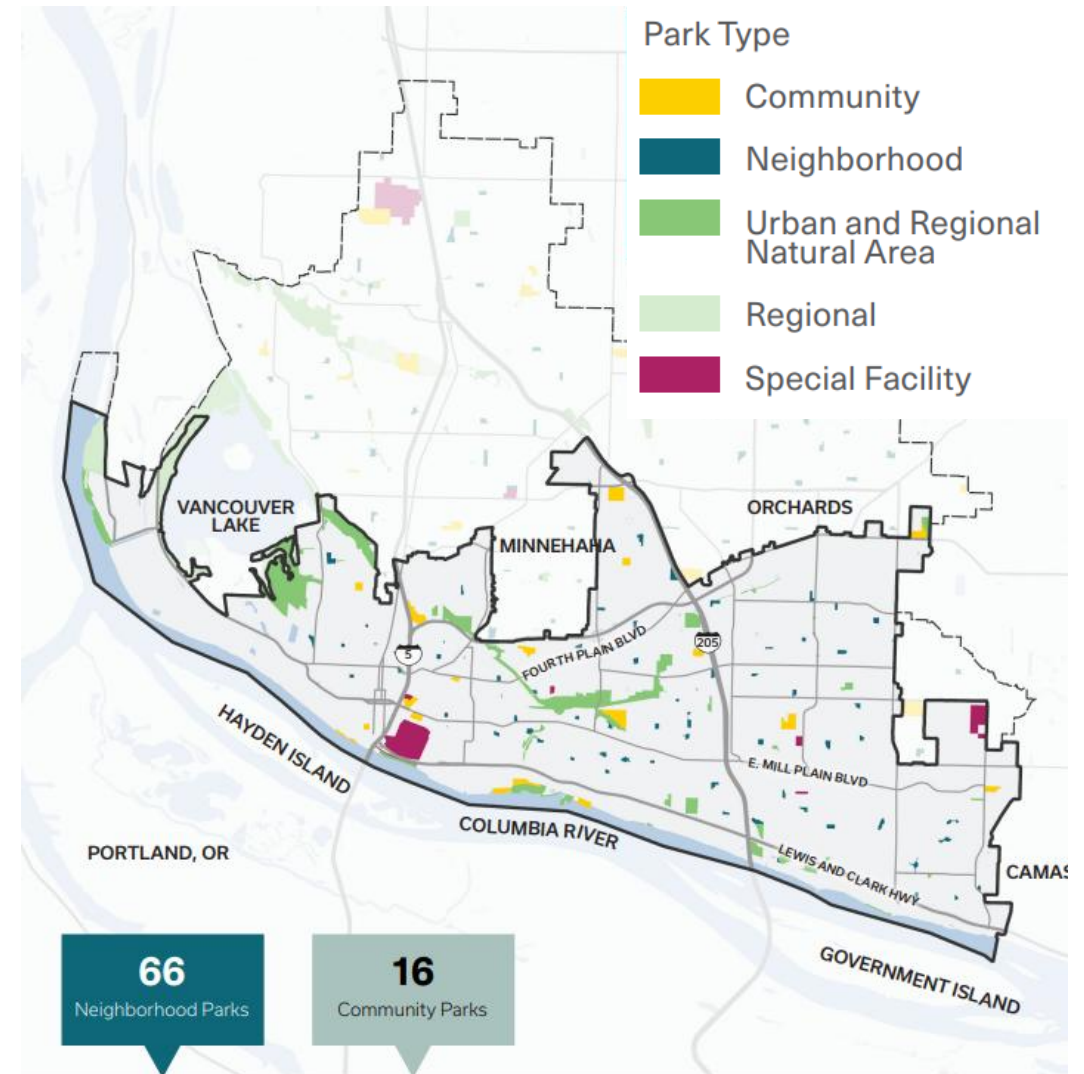


*Source: City of Vancouver*

# Vancouver's Parks

- Department of Parks, Recreation, and Cultural Services
- 1,775 acres of parkland across 106 sites and 20 miles of trails
- 4.19 acres of parkland / 1,000 residents
  - Goal: **6 acres of acquired** neighborhood/community parks per 1,000 residents
  - Goal: **4.25 acres of developed** neighborhood/community parks per 1,000 residents
- 75% of residents live within a half mile of park properties

## Vancouver Parks by Type

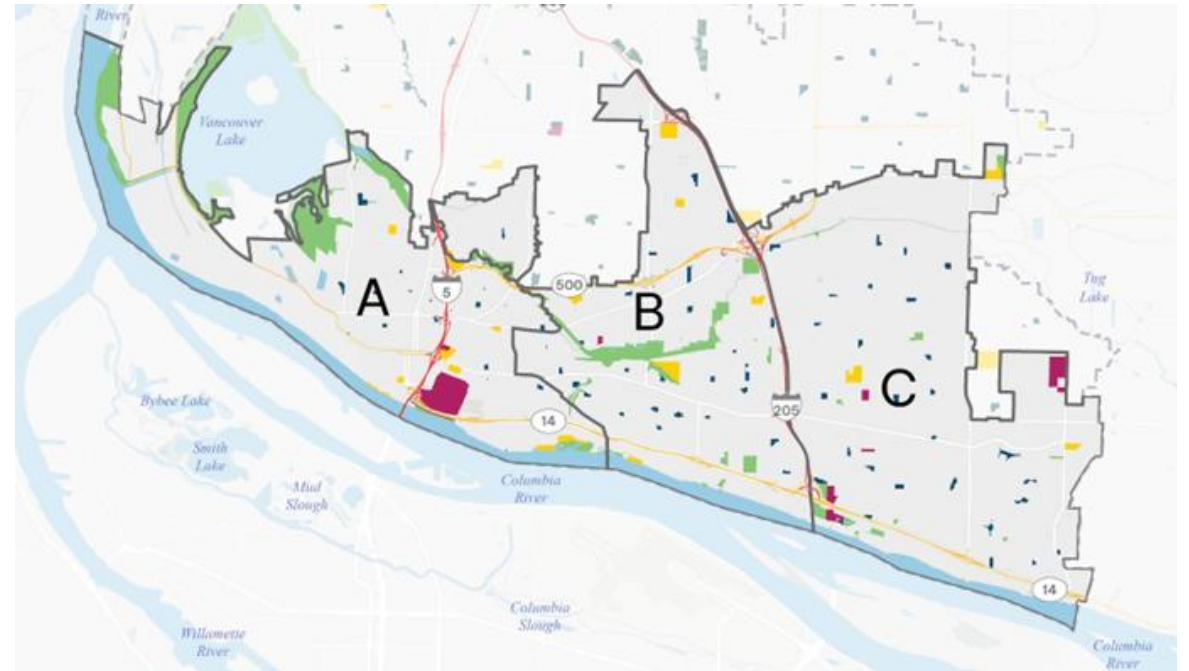


Source: Our Vancouver Community Atlas

# Park Impact Fee Districts

- 3 Park Impact Fee (PIF) Districts
  - Each establishes standards for level of service
  - All assess impact fees on new residential development to offset the cost of meeting the recreational needs of a growing population
- East of I-205 = desire for more parks
- West of I-205 = desire for updated park amenities, including benches and trails

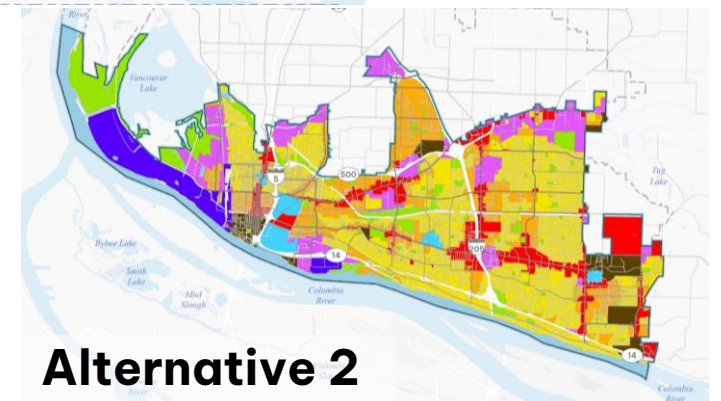
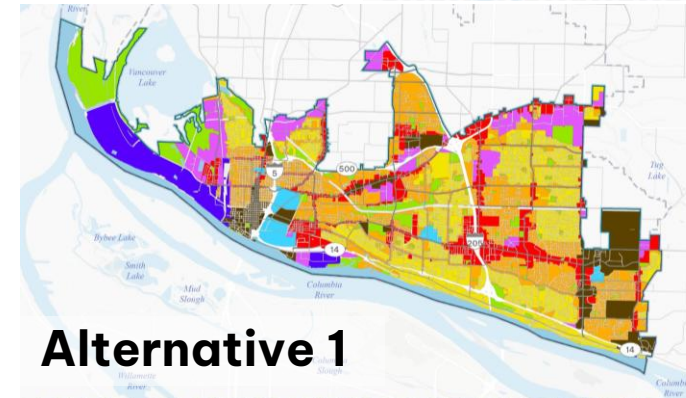
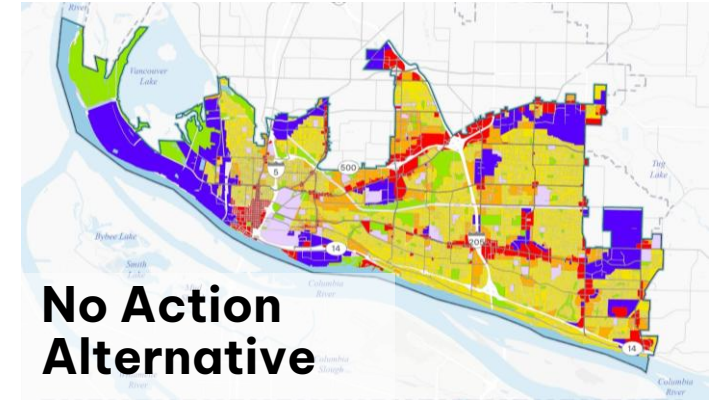
## Vancouver Park Impact Fee Districts



Source: Preliminary draft environmental impact statement; Clark County

# Similar Impacts

- None would have direct impacts on existing parks or change the amount of land currently designated as Parks/Open Space land use.
- All would **increase the demand** on the city's existing parks and recreational areas.
- Under all alternatives, **Park Impact Fee District C** (east Vancouver) would have the largest need for park land acquisition and development.



# Different Impacts

\*Acquisition need based on goal of 6 acres of acquired neighborhood/community parks per 1,000 residents.

\*\*Development need based on a goal of 4.25 acres of developed neighborhood/community parks per 1,000 residents.

Need for Additional Parks <i>in acres</i>	No Action Alternative	Alternative 1	Alternative 2
<b>Overall</b>	Lowest <ul style="list-style-type: none"> <li>Acquisition*: 408</li> <li>Development**: 289</li> </ul>	Medium <ul style="list-style-type: none"> <li>Acquisition: 622</li> <li>Development: 441</li> </ul>	Highest <ul style="list-style-type: none"> <li>Acquisition: 700</li> <li>Development: 496</li> </ul>
<b>PIF District A</b> <i>West Vancouver</i>	Highest <ul style="list-style-type: none"> <li>Acquisition: 76</li> <li>Development: 54</li> </ul>	Medium <ul style="list-style-type: none"> <li>Acquisition: 75</li> <li>Development: 53</li> </ul>	Lowest <ul style="list-style-type: none"> <li>Acquisition: 65</li> <li>Development: 46</li> </ul>
<b>PIF District B</b> <i>Central Vancouver</i>	Highest <ul style="list-style-type: none"> <li>Acquisition: 134</li> <li>Development: 95</li> </ul>	Lowest <ul style="list-style-type: none"> <li>Acquisition: 70</li> <li>Development: 50</li> </ul>	Medium <ul style="list-style-type: none"> <li>Acquisition: 126</li> <li>Development: 89</li> </ul>
<b>PIF District C</b> <i>East Vancouver</i>	Lowest <ul style="list-style-type: none"> <li>Acquisition: 199</li> <li>Development: 141</li> </ul>	Medium <ul style="list-style-type: none"> <li>Acquisition: 477</li> <li>Development: 338</li> </ul>	Highest <ul style="list-style-type: none"> <li>Acquisition: 509</li> <li>Development: 361</li> </ul>

# Ways to Lower Impacts

## *"Avoidance, Minimization, and Mitigation Measures"*

- Future development resulting from implementation of the Comprehensive Plan Update will increase revenues from taxes and fees, including park impact fees, which would help offset costs associated with the increase in demand for parks and recreation.
  - The City collects park impact fees per unit pursuant to VMC 20.915.050. It is a sliding scale value that increases annually and unit type (single-family or multifamily). To fund additional parks acquisition and development, the City could consider changes to its impact fee structure and explore new funding sources, including adding Commercial PIF.
- Explore opportunities to develop new parks, open space, and recreation facilities, especially in portions of the City with access gaps to meet LOS standards.
- Continue to work closely with the City's transportation team to plan and create opportunities for parks.

# Ways to Lower Impacts (Cont.)

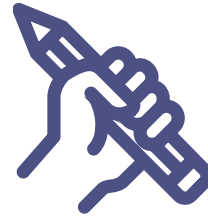
- Periodic updates to the Park System Comprehensive Plan to account for increased population and associated need for parks and recreation spaces.
- Use subarea planning to identify locations for parks based on the unique resources, setting, and interconnection.
- Require buffers around parks to minimize impacts to park resources, as well as publicly accessible open space within new developments.
- Maximize multi-use of resources and properties where compatible, such as park natural areas and stormwater properties.
- Require pedestrian connections between developments within institutional campus areas, higher density developments, and existing and future parks/trails.
- Density transfers or cluster-type development such as increased building height to preserve a signature tree, grove or grassland and provide access to natural spaces.
- Continue to use late-comer agreements to fund infrastructure.

# Next Steps



## Understand potential impacts

- Draft Environmental Impact Statement (DEIS)
- **Public comment period**



## Refine map, policies, & code

- Determine preferred alternative based on DEIS comments
- **Drafts of plan, code, and map for public comment**



## Adopt plan and code

- Final Environmental Impact Statement (FEIS)
- City Council adopts plan, code, and map

# Questions and Discussion

# Thank you!

[OurVancouver2045@cityofvancouver.us](mailto:OurVancouver2045@cityofvancouver.us)

[www.BeHeardVancouver.org/plan2045](http://www.BeHeardVancouver.org/plan2045)

# Regional Parks Funding

---

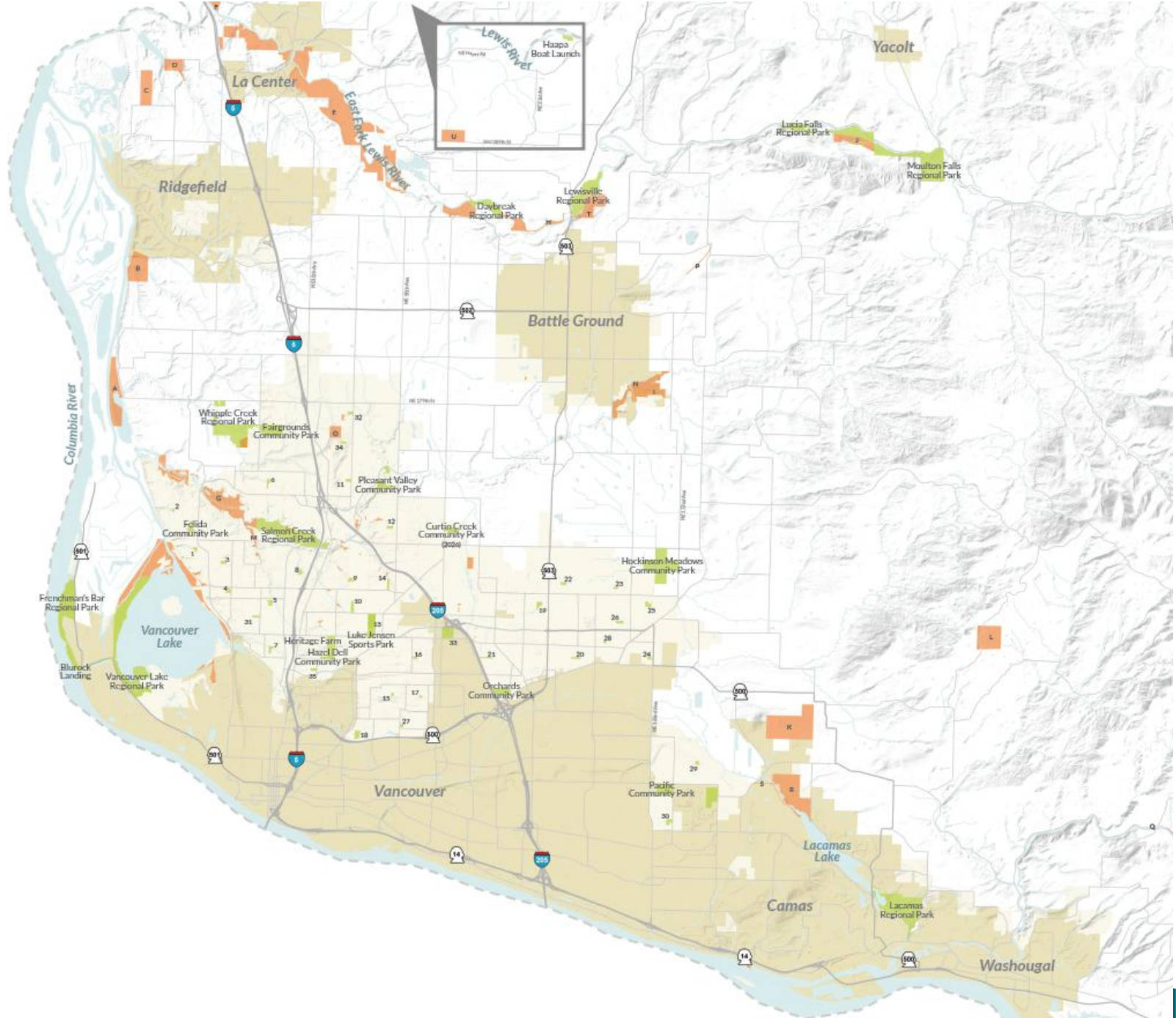
Sustainable Future



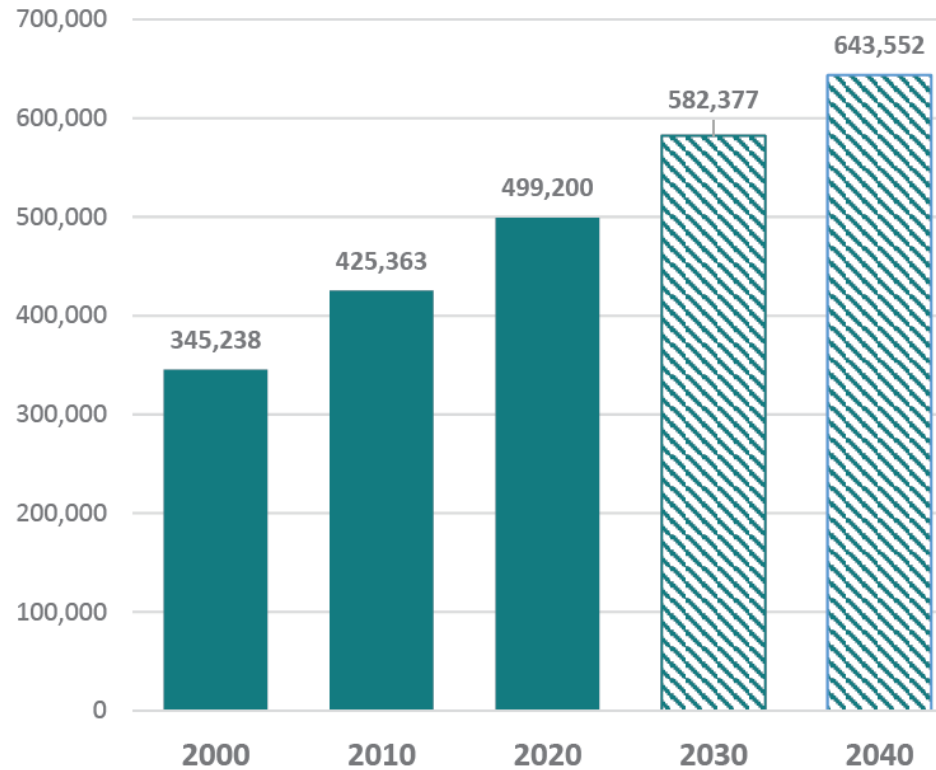
**CLARK COUNTY WASHINGTON**

---

**PUBLIC WORKS  
PARKS AND NATURE**



# Rapid Growth

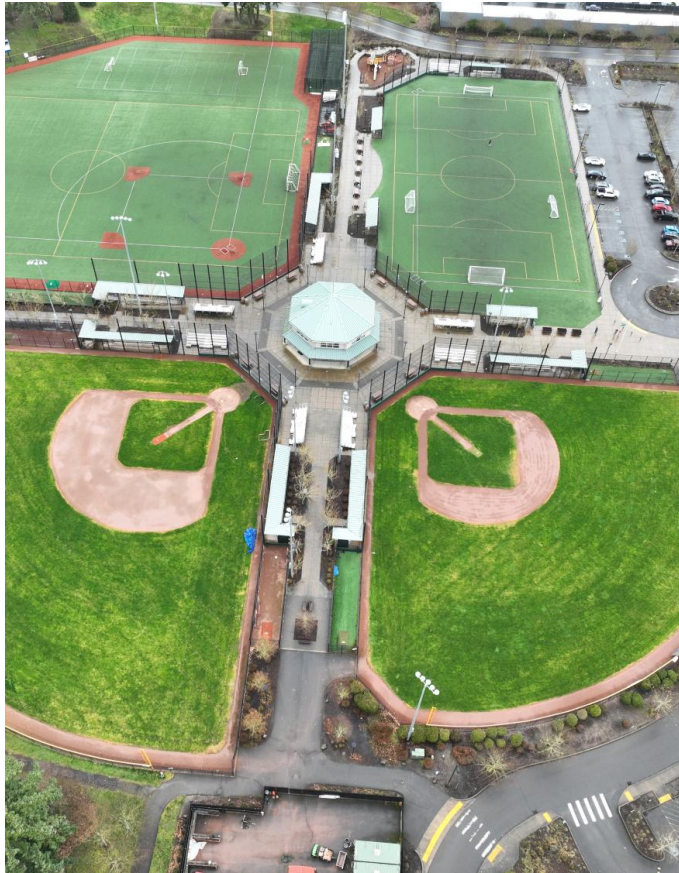


	OFM Adj. Census	Estimate			Projection				
		2021	2022	2025	2030	2035	2040	2045	2050
Clark	503,311	513,100	520,900	543,507	583,307	622,329	660,653	698,416	735,724



# Demand for high quality parks and open spaces

---



# Current funding is not adequate

---

Operating budgets are stretched thin due to:

- Deferred maintenance
- Rising costs of labor and materials
- Dedicate funding sources have not kept pace with inflation



# Sustainable Future Task Team

---



Understand the needs and gaps of each park system



Benchmark systems against national data to see where we stack up



Explore and understand other park system funding models regionally and nationally



Provide and recommend sustainable long-term pathways forward