



Parks & Recreation Advisory Commission Meeting Agenda

July 16, 2025
4:30 PM

City Hall

Aspen Room
415 W. 6th Street
Vancouver, WA
Online Access: [Teams Link](#)

1. **Call to Order and Roll Call - 4:30pm**
2. **Approval of Minutes - 4:35pm**
 - a. Approval of 6.18.25 PRAC Meeting Minutes
3. **Community Forum - 4:37pm**

To provide public testimony, please see instructions below.
4. **Workshop - 4:40pm**
 - a. Disability Pride Month - Highlights
 - b. Homestead Neighborhood Park Update
 - c. Park Project Updates
 - d. Vancouver Innovation Center Purchase and Sale Agreement Update
 - e. Walk-on Item: Ogden Park
5. **Commission and Staff Reports - 5:52pm**
 - a. Department Director
 - b. Commission Chair
 - c. Evergreen School District

Parks & Recreation Advisory Commission

Members

Jayne Cavaness, **President**
Angilo Fletcher, **Vice President**

Jeremy Robbins
Jenny Thompson
Stephen Wille
James Luce
Valerie Striplin
AJ Panter, VPS
Cale Piland, EPS Parks Foundation
(vacant)

Parks, Recreation and Cultural Services Department
P.O. Box 1995 Vancouver, WA
98668
360-487-8311
TTY: 711
cityofvancouver.us

d. Vancouver Public School

e. Parks Foundation

6. Open Discussion & New Business - 5:57pm

Adjournment - 6:00pm

Community Forum Instructions

The public is invited to speak regarding any issue. Members of the public testifying are asked to limit testimony to three minutes. There are three ways to provide comments:

1. In Writing: Public comments can be submitted in writing (name, address, contact information and comments) via email to parksrecculture@cityofvancouver.us by 5 pm on the day before the meeting.
2. Remotely: Pre-register by phone at 360-487-8311 or email parksrecculture@cityofvancouver.us by 5pm the day before the meeting
3. In Person: Pre-register by phone at 360-487-8311 or email parksrecculture@cityofvancouver.us by 5pm the day before the meeting or fill out a Public Comment form in person prior to the start of the Community Communications portion of the meeting

City Hall is served by C-TRAN. Route information and schedules are available online at www.c-tran.com. You also may reach C-TRAN at (360) 695-0123 for more information on times, fares, and routes.

Anyone needing language interpretation services or accommodations with a disability at a Vancouver City Council meeting may contact the City Manager's staff at (360) 487-8600 (RELAY: 711). Assistive listening devices and live Closed Captioning are available for the deaf, hard of hearing and general public use. Please notify a staff person if you wish to use one of the devices. Every attempt at reasonable accommodation will be made. To request this agenda in another format, please also contact the phone numbers listed above.



Parks and Recreation Advisory Commission

Meeting Minutes

Wednesday, June 18, 2025

4:30 p.m.

Vancouver City Hall

Aspen Room

Commissioners Present:

Cavaness, Thompson, Luce, Wille, Robbins, Striplin, and Fletcher

Commissioners Absent:

Piland and Panter

Staff Present:

Herbst, Kennedy, Perlick, Brosius, Tubberville, Heath, Miletich, Johnson, Baynard-Cooke, Nilo, Stokke, Hull, White, Guzman, Burton, Snyder, Gutierrez, Meade, and Nilo.

Guests: Ross Hoover (Parks Division Manager for Clark County)

Item 1: Call to Order

Chair Cavaness called the Parks and Recreation Advisory Commission (PRAC) regular meeting to order at 4:31 p.m. in the Aspen Room at Vancouver City Hall and online via Microsoft Teams. Commissioners Piland and Panter were absent.

Item 2: Approval of Minutes

PRAC approved the April 16, 2025 meeting minutes by consensus with no changes.

Item 3: Public Comment

None presented.

Members

Jayne Cavaness

President

Angilo Fletcher

Vice President

Jeremy Robbins

Jenny Thompson

Stephen Wille

Valerie Striplin

James Luce

AJ Panter, VPS

Cale Piland, EPS

Vacant, Parks Foundation

**Parks, Recreation and
Cultural Services
Department**

P.O. Box 1995
Vancouver, WA 98668
360-487-8311
TTY: 711
cityofvancouver.us

To request accommodation or other formats, please contact:
Alicia Nilo | 360-487-8311 | TTY: 711 | parksrecculture@cityofvancouver.us

Item 4: Our Vancouver Comprehensive Plan Update

Meredith Herbst (Associate Planner, Community Development) and Rebecca Kennedy (Deputy Director, Community Development) presented an overview of the potential impacts of alternatives for Vancouver's growth.

A recap was provided on the [Comprehensive Plan](#) and alternatives for Vancouver's growth and development. The comprehensive plan will serve as a guide for the city's growth and development over the next 20 years (2025-2045). We are currently in the phase where we are working to understand potential impacts and are in the public comment period of the draft EIS.

An overview and comparison of maps with alternative plans was shared. Considerations include housing/job targets, density and mixing of uses, and regional centers of activity.

The environmental impact statement process for the comprehensive plan is being developed as the city studies how each alternative could impact different aspects of the built and natural environment. Factors include:

- Land and shoreline use
- Housing
- Aesthetics (light and glare)
- Historic and cultural preservation
- Transportation
- Noise
- Public service and utilities (emergency services, water, sewer, schools, **parks and recreation**)
- Air quality, greenhouse gases, and climate
- Earth (geological hazard areas, soils, topography)
- Water resources
- Plants and animals

Once the DEIS report is published in July, the public will have the opportunity to comment on it. Public meetings and virtual sessions will be held through July and August.

A preliminary overview of draft environmental impact statement findings was shared. Vancouver's PRCS department oversees:

- 1,775 acres of parkland across 106 sites and 20 miles of trails
- 4.19 acres of parkland/1,000 residents
 - Goal: 6 acres of *acquired* neighborhood/community parks per 1,000 residents
 - Goal: 4.25 acres of *developed* neighborhood/community parks per 1,000 residents
- 75% of residents live within a half mile of park properties

Park Impact Fee Districts include districts A, B, and C. Each district establishes standards for the level of service and assesses impact fees on new residential development to offset the cost of meeting the recreational needs of a growing population. East of I-205 desires more parks, while West of I-205 desires updated park amenities, including benches and trails.

Ways to lower impacts could include increased revenues from taxes and fees, development of parks and facilities with access gaps to meet LOS standards, continued partnership with the City's transportation team, and periodic updates to the Park System Comprehensive Plan. Next steps after the Impact Statement comment period will begin drafting the plan, code and maps for public comment before adoption.

The floor was open for discussion and questions from commissioners. Luce asked about coordination between the City and the County; Herbst confirmed that we are working as closely with the County as possible through regular meetings.

Robbins asked if there is land that can be acquired for parks east of the I-205; parks planning includes looking at more resources for sustainable funding to be able to strategically develop on land that meets parks-planning needs and priorities. Robbins also expressed the need for a new community center in that area. Cavaness also inquired about potential options for available land as a third community center. Perlick recognized that as a key example of community need, where we are seeking to meet.

Thompson inquired about annexation considerations and potential changes to city lines; it was clarified that if land is added, the parks' need will grow on top of existing need. Perlick added that the City and County are engaging in more dialogue regarding our ability to keep service levels up with our growth rates. Cavaness asked how non-residential commercial PIF can support growth; Perlick confirmed that it can be used to enhance certain types of mixed-use developments. Cavaness suggested protecting more species of trees on developer land, as well as including trails as a type of transportation.

Wille expressed the merits of innovation and working with other large entities and local partners. Striplin inquired about similar-sized municipalities in Washington state, as well as out-of-state, and how they are working to solve similar challenges.

Item 5: Charter for Countywide Sustainable Parks Funding

David Perlick introduced Ross Hoover (Clark County Parks Division Manager) to present potential opportunities for regional, sustainable parks funding across the county. The County Council has initiated outreach to the cities in Clark County to launch early dialogue to inform the process ahead.

Ross Hoover emphasized that the County system manages several large, regional parks throughout the county that are heavily used. They are currently looking at their current level of service to assess existing gaps, as well as considering the growth that is ahead. There is a recognition that the parks system is changing to meet the regional need, beyond the local need.

The rapid growth of Clark County was highlighted, with our current census estimating our 2025 population at 543,507, and a projected population of 582,377 by 2030 and 643,552 by 2040. The rate of growth has increased over recent years. The larger regional parks serve a larger capacity with multi-uses, whereas neighborhood parks are more typical within a city parks system. Those systems are brought together through regional trails and connectors.

The demand for high-quality parks and open spaces will continue to rise as the population grows. However, current funding is not adequate. Operating budgets are stretched thin due to deferred maintenance on existing infrastructure, rising costs of labor and materials, and dedicated funding sources have not kept pace with inflation.

With representatives from every city, Clark County is seeking partnerships to assemble a Sustainable Future Task Team with the following objectives:

- Understand the needs and gaps of each park system
- Benchmark systems against national data to see where we stack up (through local and regional data)

- Explore and understand other park system funding models regionally and nationally
- Provide and recommend sustainable long-term pathways forward

Future phases of the work will include pulling together key stakeholders to ensure everyone can express needs, user-level system plans, and a snapshot of anticipated growth. Perlick shared that a group of elected officials from the City and County will initiate a meeting to identify priorities and capacities, and highlighted that PRAC will play a critical role in providing realistic recommendations. The top request from other counties was to provide interconnectedness between our trail corridors to provide access. More discussion will continue in January.

Perlick and Hoover opened the floor for questions and discussion. Striplin expressed appreciation and excitement for the granular community information to be collected from key stakeholders. Wille expressed hope for responsiveness on County Park projects as comments are requested; Hoover highlighted that the tactics used by the County to collect feedback and increase engagement are pivoting to be more integrated.

Thompson is looking forward to hearing more and is excited to support the effort. Robbins asked if the City and County would eventually become competitors for funds; Hoover spoke to several case studies that are based on sharing models between City/County, and this would be the hope for future investments. Perlick added that buy-in for all parties will be a major consideration. Luce and Fletcher both expressed their enthusiastic support.

Item 6: Recreation Summer Registration Updates

Andy Meade and Angela Brosius provided an overview of our recreational registration numbers over the summer so far.

Fircrest camp is full, and Marshall camp is 95% full. We are at capacity with registration. The non-resident fee has had significant impacts. We have 8 partners offering camps. We did branch out with more camps, including photography and CEO camps in addition to sports camps.

Softball leagues have transitioned from city-operated to vendor-operated. We are still assessing David Douglas as a potential sports site, though there are some repairs needed.

The Playground Program is a free, 4-hour a day program with meals for folks living in those neighborhoods. We have special guests from various city departments to help reduce costs and raise activity.

FCC slide replacement is happening for nearly the full month of August.

Silver memberships are down almost 500 members in the first 4-5 months, with a decrease in family memberships. Fletcher asked if there are any consistencies for the folks who have chosen not to return to their membership. Brosius highlighted that we increased our prices for the first time in 9 years, including a raised non-resident fee. She confirmed that we are asking and capturing folks why they are cancelling, and that our fees are reasonable and comparable. Striplin commented that in the following years, folks will recognize that changes to fees will not be as drastic.

We will continue to monitor, as change will initially result in lower utilization. Cavaness commended staff for using city-internal resources.

Item 7: Director's Report

Commissioners were encouraged to volunteer at the Vancouver Arts and Music Festival.

Perlick shared a message around a high-level supplemental budget issue regarding the Arts Hub. After receiving a significant amount of public testimony at our recent Council meeting, we have updated our budget allocation to sustain funding, initially not recommended to be approved – however, this decision was reversed after public testimony in support of the Arts Hub activation.

Item 8: Chair Report

Cavaness announced the Pollinator Festival on 6/21 at Marshall Park, for a day dedicated to celebrating pollinators.

She shared that she attended a climate resiliency meeting, learning about community resiliency gardens.

Item 9: Evergreen School District Report

None presented.

Item 10: Vancouver Public School Report

None presented.

Item 11: Open Discussion & New Business

Robbins inquired what new private pools in Vancouver are charging. Meade provided that Goldfish Swim School at the mall charges about \$40 per lesson, and that the Hazel Dell pool has not opened yet but will likely follow a similar model.

ADJOURNED

With no further business, the meeting was adjourned at 6:03 p.m.



Disability Pride Month

Melody Burton
Sr. Communications Specialist
PRCS Accessibility Committee Liaison



Disability Pride Month

What is it and why is it important to the City?



- Disability Pride Month celebrations began across the country in 2015
- Disability Pride means showing up for everyone in our community with purpose
- Disability Pride celebrates the contributions of people with disabilities and brings awareness to the continued struggles for disability inclusion and acceptance.

Disability Pride Month

Disability Pride Flag



Created by activist Ann Magill in 2019 and updated in 2021

The charcoal background honors lives lost to ableism. The diagonal stripes cut across barriers and represent different types of disabilities:

- Green – sensory
- Blue – psychiatric
- White – invisible
- Gold – neurodivergent
- Red – physical

Disability Pride Month

Honoring civil rights milestones

- 2025 marks the 35th anniversary of the July 1990 signing of the Americans with Disabilities Act (ADA).
- 2025 also marks the 52nd anniversary of the 504 Sit-Ins and passage of Section 504 of the Rehabilitation Act, the first federal civil rights protection for disabled people.



Where to Find City Resources

- Access Statements
- Request Accommodations
- Accessibility Barriers and Complaints Form
- Accessibility Achievements
- Self-Evaluation and Transition Plan
- Digital Accessibility

The screenshot shows the City of Vancouver website page for "Accessibility and Inclusion for People with Disabilities". The page features a navigation bar with links for "UTILITY BILL", "CALENDAR", "ENGLISH", "Services", "Business", "Government", "Community", and "Data". The main heading is "Accessibility and Inclusion for People with Disabilities". Below the heading, there is a paragraph explaining the City's commitment to ensuring an accessible and equitable place for people with disabilities. Another paragraph mentions the City's core values: livability, equity and inclusion, innovation, sustainability and resiliency, and community trust and relationships. A central section contains six blue buttons: "Disability Pride Month", "Access Statements", "Request Accommodations", "Accessibility Barriers and Complaints", "Accessibility Achievements", "Self-Evaluation and Transition Plan", and "Digital Accessibility". A "Contact" section follows, providing contact information for Jen Dugger Spalding, ADA Coordinator, including address, phone, TTY, and email.

CITY OF Vancouver WASHINGTON

UTILITY BILL | CALENDAR | ENGLISH

Services Business Government Community Data

HOME > CITY MANAGER'S OFFICE > ACCESSIBILITY AND INCLUSION FOR PEOPLE WITH DISABILITIES

Accessibility and Inclusion for People with Disabilities

The City of Vancouver understands that legislation protecting people with disabilities provides us with a floor, not ceiling, and the spirit of the law goes well beyond that. The City is committed to ensuring that people with disabilities are provided an accessible and equitable place where they can live, work, learn, play, and thrive.

In 2021, Vancouver City Council identified five core values for the city: livability, equity and inclusion, innovation, sustainability and resiliency, and community trust and relationships. All of these core values intersect with and reflect a prioritization of accessibility, inclusion, and justice for our disability community.

Disability Pride Month | Access Statements | Request Accommodations

Accessibility Barriers and Complaints | Accessibility Achievements

Self-Evaluation and Transition Plan | Digital Accessibility

Contact

For more information about disability accessibility and inclusion at the City of Vancouver, please contact:

Jen Dugger Spalding
ADA Coordinator
Address: 415 W 6th Street, Vancouver, WA 98660
Phone: [360-726-7122](tel:360-726-7122)
TTY: 711
Email: adacoordinator@cityofvancouver.us

Celebrate with Us

- **July 7:** Disability Pride Month Proclamation
- **July 14-30:** Disability Pride Flag at community centers and City Hall
- **July 27:** ADA Anniversary Concert at Sunday Sounds
- **Aug. 22:** Barbie movie at Columbian Tech Center Park with on-screen ASL interpretation
- Get City disability stickers at community centers and City Hall

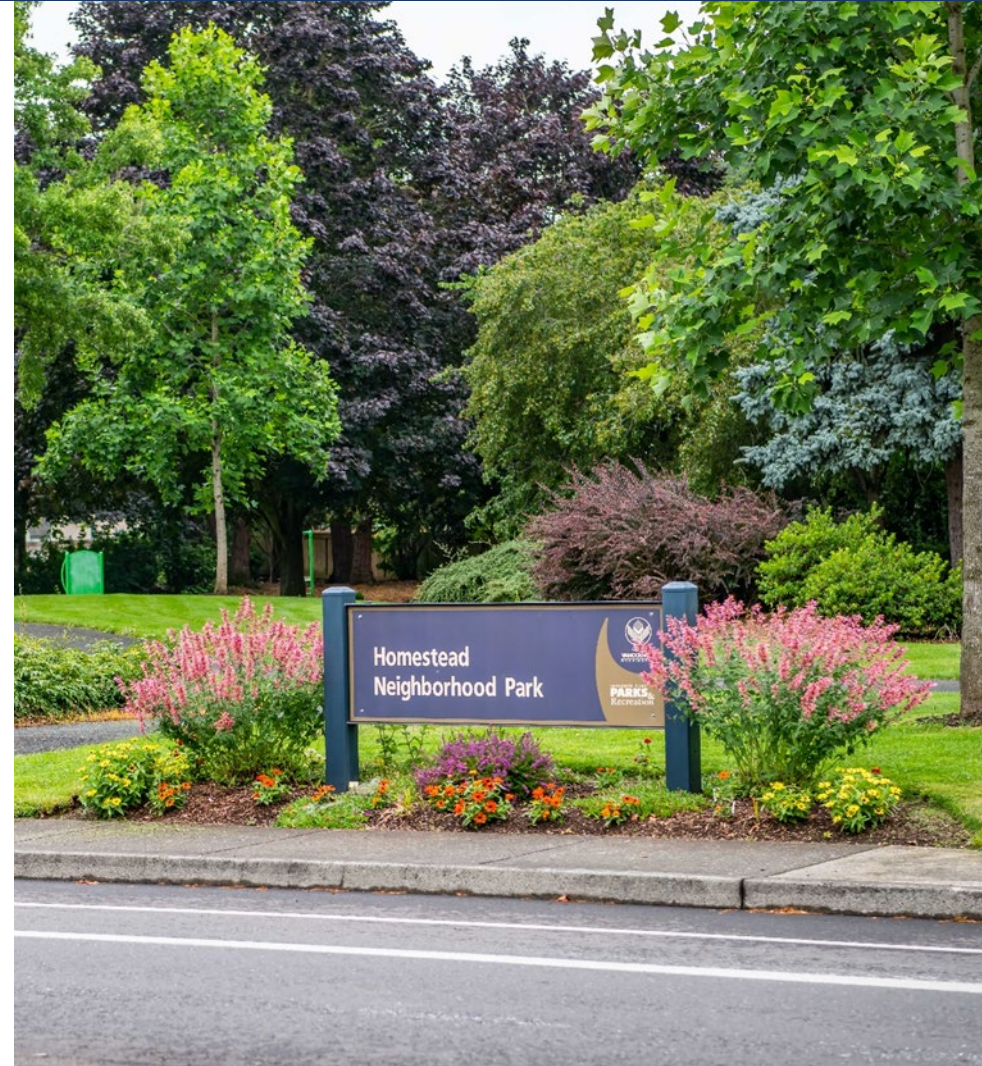


Thank You



Homestead Neighborhood Park

- **Playground Replacement Update**
- **Business license surcharge**
- **Playground Replacement Program**



Homestead Neighborhood Park

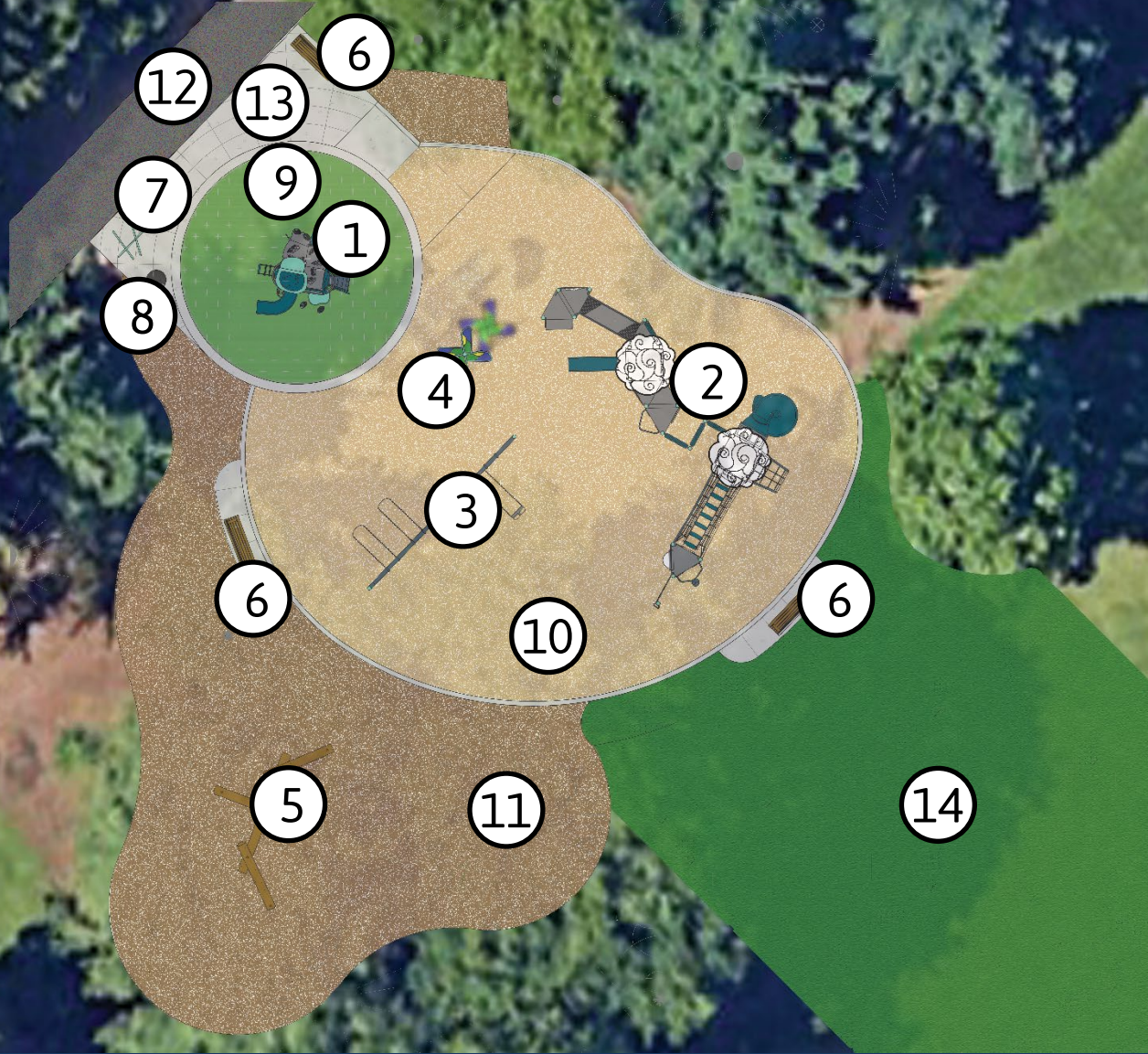
- 6.2-acre neighborhood park
- East Vancouver
- Serves the Cascade East and Cascade Highlands neighborhoods
- Amenities
 - Walking paths, fitness course, BBQ area, picnic tables, benches, playground & open irrigated lawn



Before



Master Plan



Legend

- 1. Ages 2-5 Play Area
- 2. Ages 5-12 Play Area
- 3. Swings
- 4. Shadow Play Flower
- 5. Log Scramble
- 6. Bench
- 7. Bike Rack

- 8. Trash Receptacle
- 9. Artificial Turf
- 10. Wood Chips
- 11. Recycled Wood Chips
- 12. Existing Path
- 13. Playground access
- 14. Construction Access







Playground Replacement Strategy

- **Funding**
 - BLS (Grants, Reet, PIF)
- **Parks Replacement Matrix**
 - Loss Severity
 - Loss Probability
 - Equity Index Score
 - Level of Service



Business License Surcharge

What is it?

- A per-employee "surcharge" added to the standard business license.

How is it calculated?

- A flat rate per employee (\$145 in 2025), increasing annually through 2030.
- Based on full-time equivalent (FTE) employees, using actual hours worked (total hours ÷ 1,664)

What does it fund?

- 18% - public safety & wellbeing
- 18% - parks (maintenance/capital)
- 40% - street improvements & capacity
- 24% - economic development infrastructure

Key Takeaway :

- Designed to fund priority areas like police, parks, streets, and economic growth
- Small businesses may be exempt or have waivers for expansion-related hires.

Vancouver Municipal Code VMC 5.04.095



Thank you



Omar.Guzman@cityofvancouver.us | 360-605-9374 | [Homestead Park](#)
[Playground Replacement](#) | [Be Heard Vancouver](#)





Park Projects Update

Terry Snyder
Park Development Manager

Roman Gutierrez
Park Developer

Phase 1 Improvements at Oakbrook Park

- Wetlands-Themed Inclusive Play Area
- 4 New Pickleball Courts
- Nature Play Area
- Portland Loo Restroom
- Sidewalk Along 99th Ave.
- Widening NE 99th Ave. for street/ADA parking
- Native planting on the southwest side of the park



Construction Status

Completed Work

- 99th Avenue widening and sidewalk
- Play area/mound concrete and curbs
- Concrete paths
- Asphalt paths
- Basalt boulder scramble, steps and decorative columns
- Pickleball court asphalt base, fences and net posts
- Portland Loo restroom and drinking fountain
- Planting soil
- Irrigation installation partially complete
- Play equipment installation partially complete

Construction Status

In progress photos



Construction Status

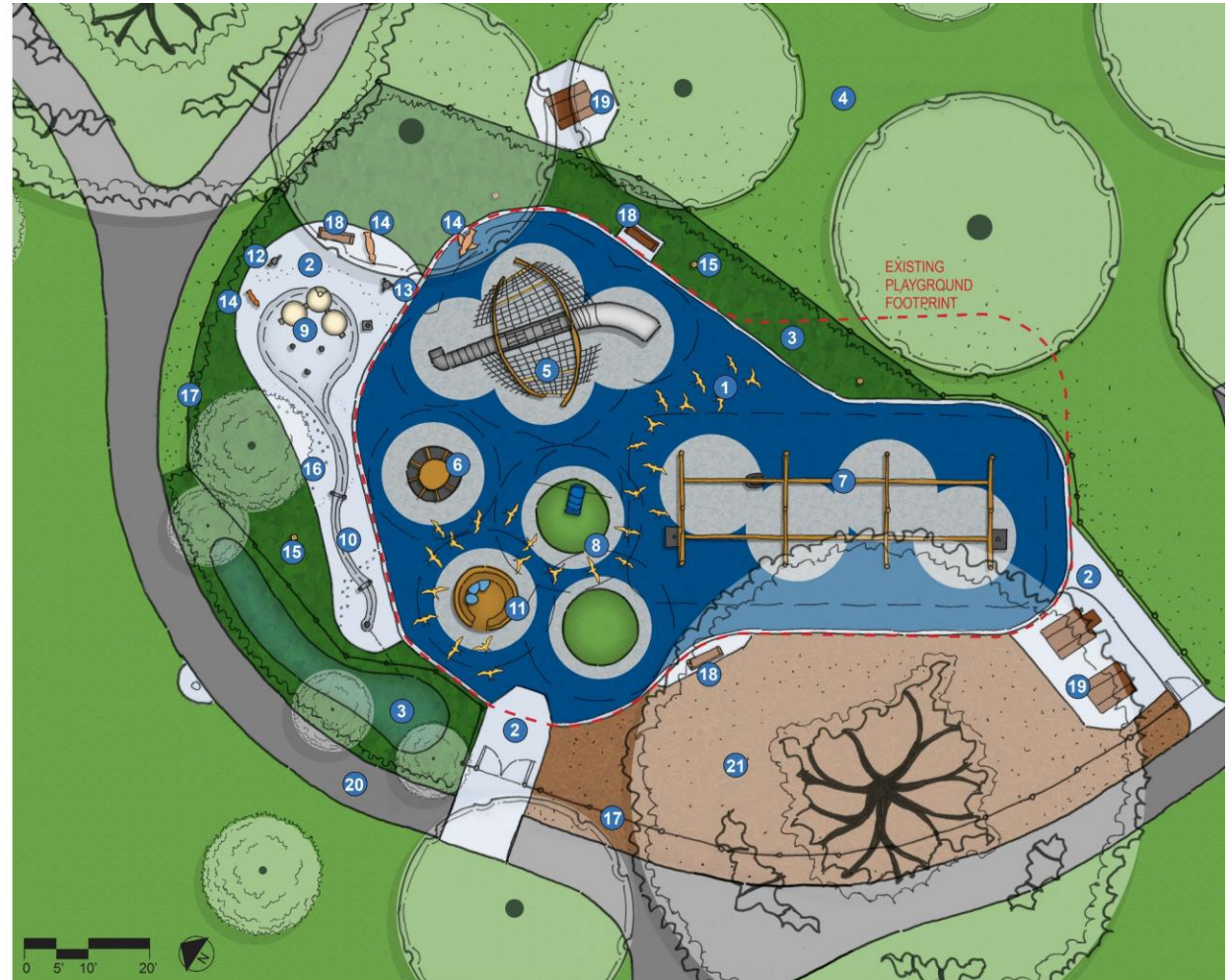
Next Steps

- Finish play equipment installation
- Poured-in-place rubber and artificial turf safety surfacing in play area and on play mound
- Finish irrigation installation
- Pickleball court surfacing
- Tree and shrub planting
- Turf lawn seeding
- Furnishings (Tables, benches, trash cans, bike racks and park signs)
- Street lighting
- ADA parking space striping

Save the date! More information coming soon about an early September reopening celebration.

Elizabeth Austin Playground at Fruit Valley Park

- Play Like a Bird theme
- Kid-sized play nest
- Accessible rubber surfacing
- Track ride with full support seat and harness
- Spinning equipment with level entry surface for easy access
- Sensory spaces with instruments, sculptures and quiet retreats
- Water play
- Climber with transfer station



Kuni Foundation Partnership

Donated in memory of Elizabeth Austin

- The Kuni Foundation donated \$1.2 million to build an inclusive playground at Fruit Valley Park
- It will honor the legacy of community leader and mother, Elizabeth Austin
- Elizabeth championed inclusive spaces that were accessible to youth of all abilities before her death in 2021 from cancer



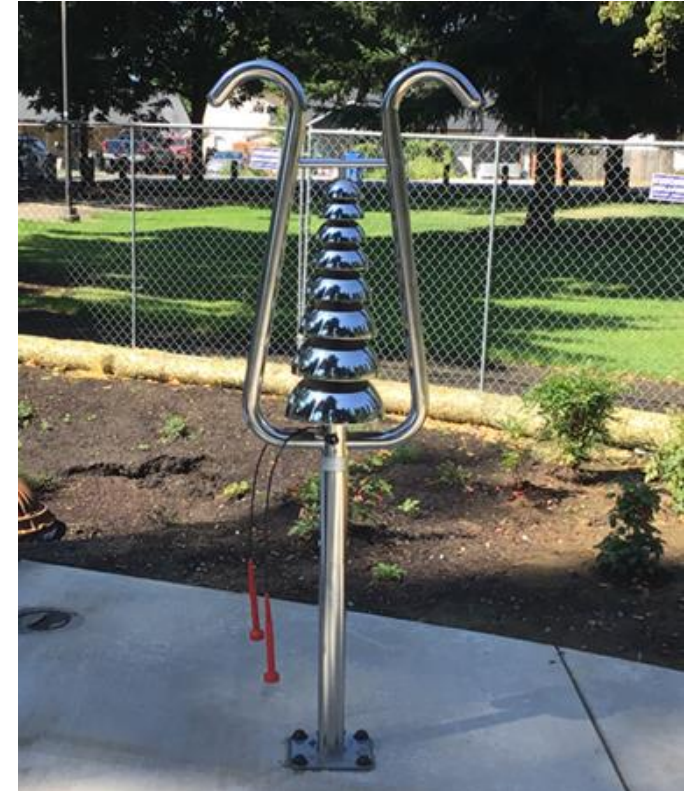
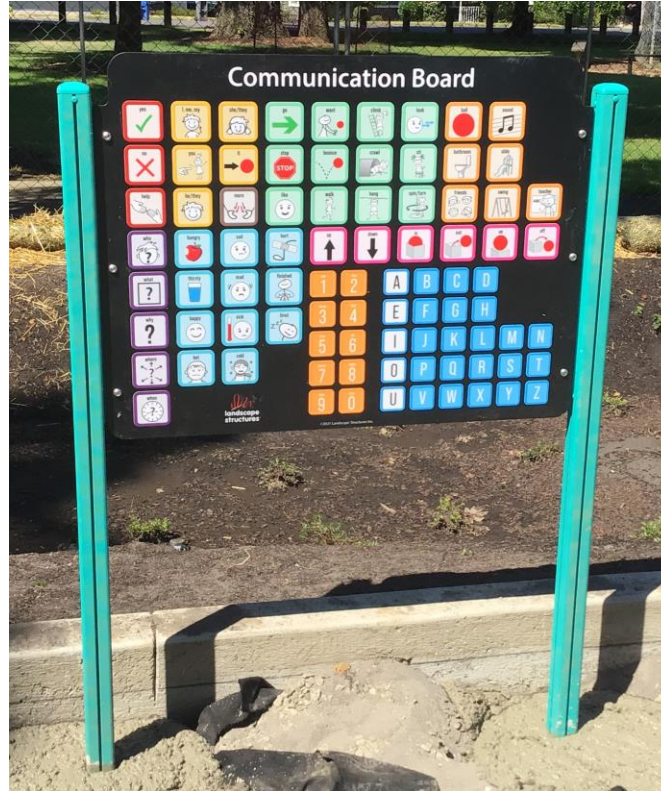
Construction Status

In progress photos



Construction Status

In progress photos



Construction Status

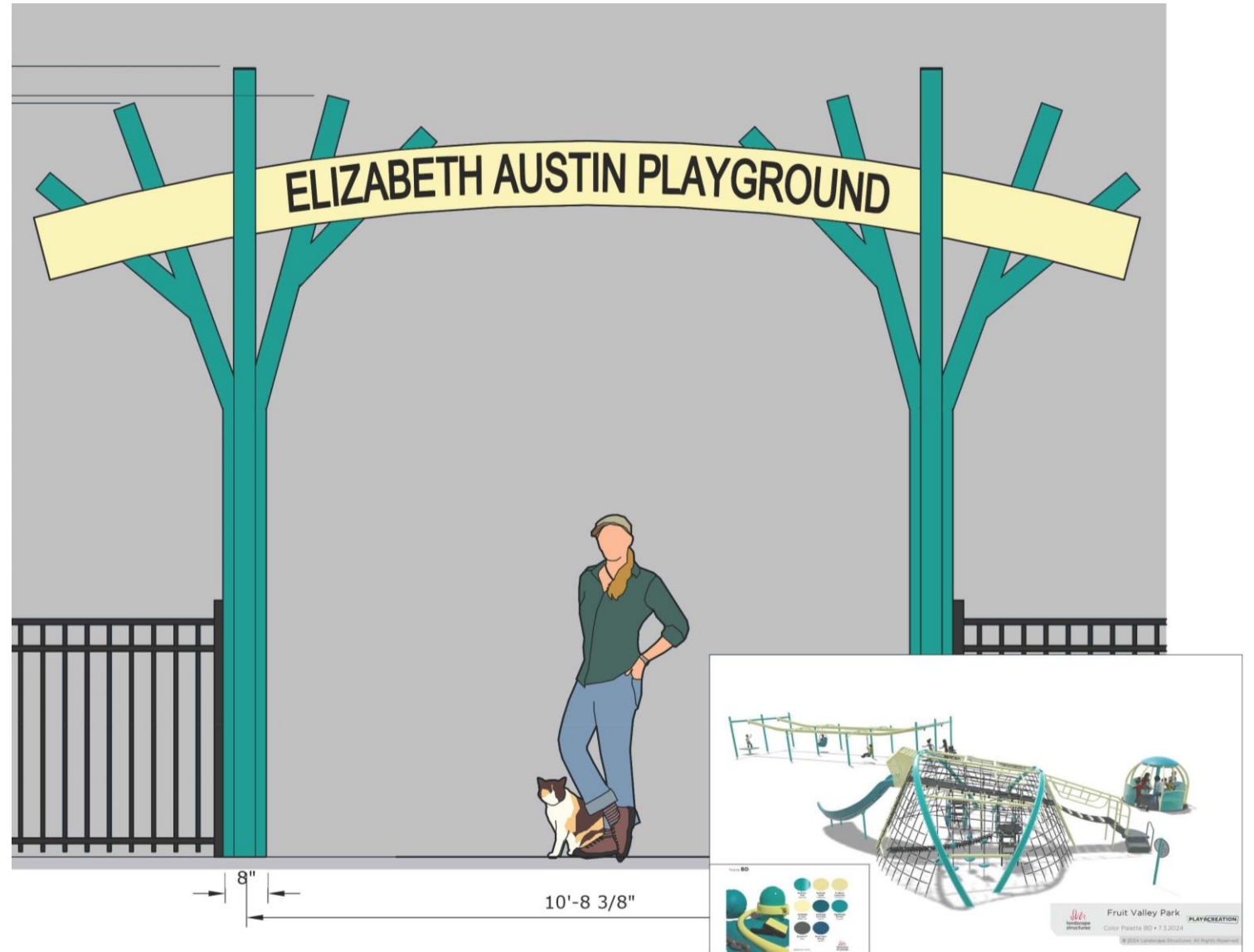
In progress photos



Construction Status

Entry Gate Mockup

Save the date!
More information coming soon
about a mid-August reopening
celebration.



Discussion



Thank You





CITY OF
Vancouver
WASHINGTON

Vancouver Innovation Center (VIC) Park Purchase & Sale Agreement

David Perlick, Director
Parks, Recreation & Cultural Services

July 16, 2025

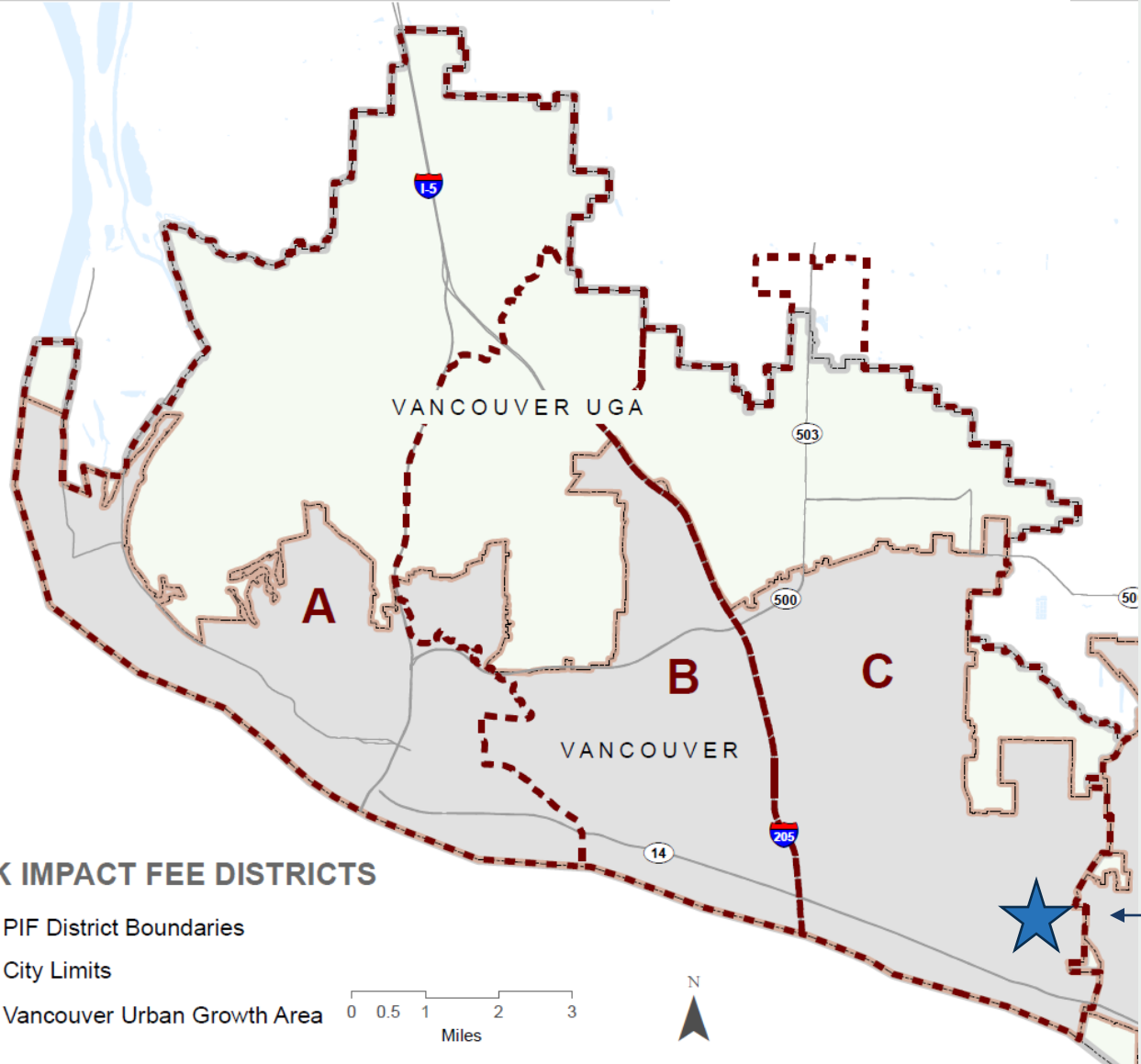


Agenda

- Site Orientation
- VIC Project History & Development Agreement
- Park Purchase & Sale Agreement Terms
- Next Steps
- Questions



Site Orientation Park Impact Fee District C



Project Area





Clearmeadows
Neighborhood Park

City of Vancouver
Stormwater Facility

Evergreen School District
20-acres (2021)

Existing Forest Area

Fisher Creek Riparian Corridor
(City of Vancouver Stormwater)

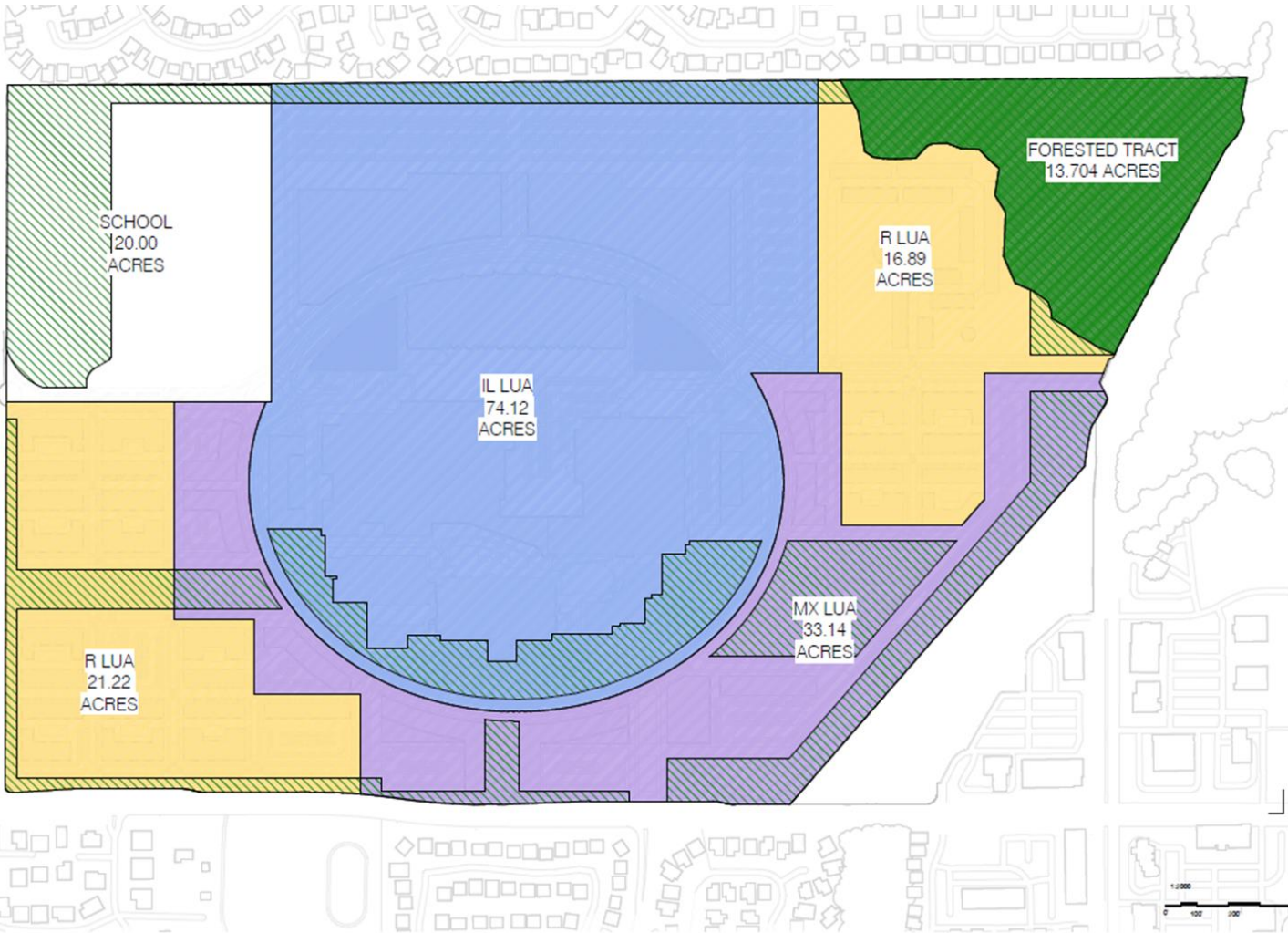
Vancouver Innovation Center
Project Boundary







Village Woods
UNA

Fisher's landing
Elem School

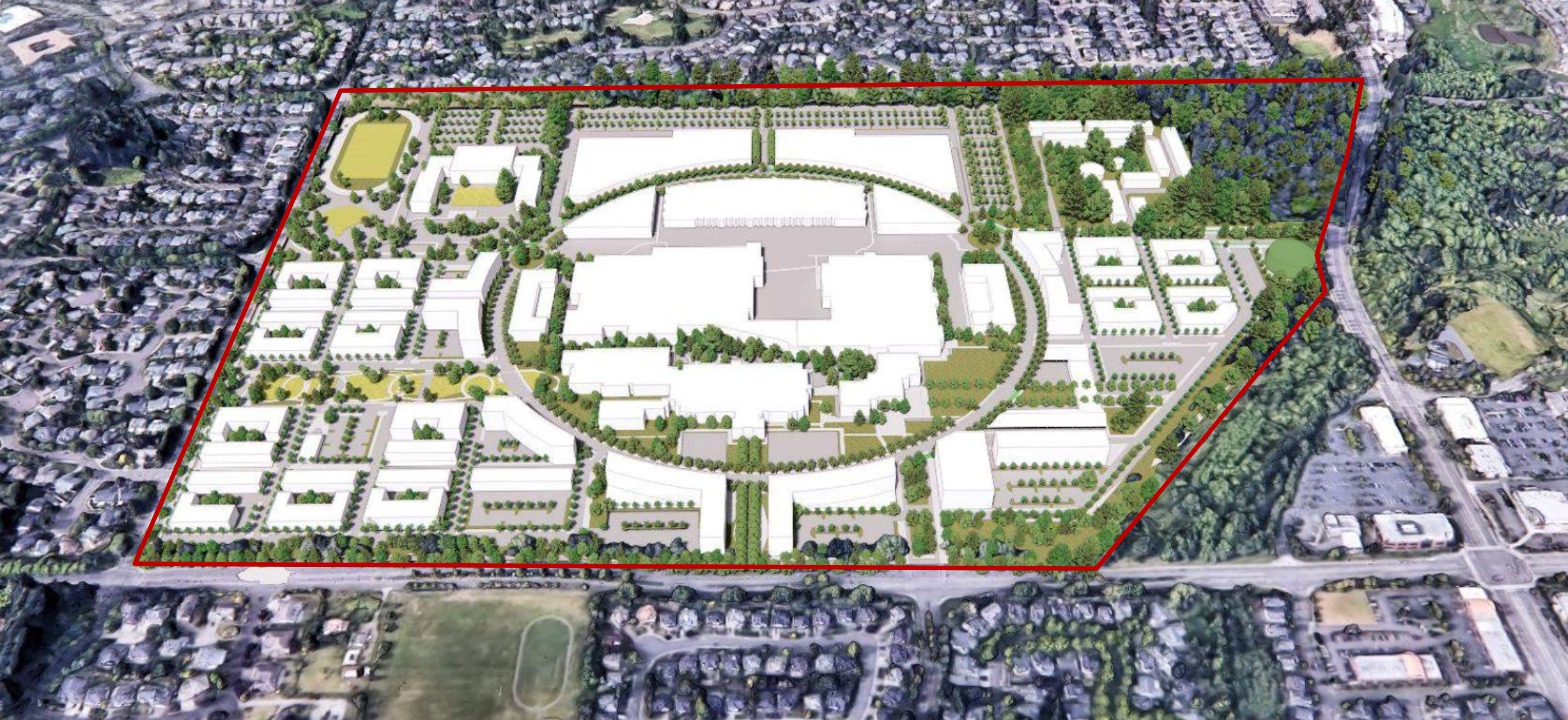
Vancouver Innovation Center

Approved Master Plan Land Use Areas



	LIGHT INDUSTRIAL (IL) - 74.13 ACRES (41.4%)
	RESIDENTIAL (R) - 38.12 ACRES (21.3%)
	MIXED-USE (MX) - 33.15 ACRES (18.5%)
	FORESTED TRACT - 13.704 ACRES (7.6%)
	SCHOOL - 20.00 ACRES (11.2%)
TOTAL - 179.10 ACRES	
	POTENTIAL OPEN SPACE







Forested Tract

- **Restrictive Covenant**
Prohibits development for other than parks & open space
- **13.704 acres**
Area subject to boundary survey
- **\$3,940,000 – Purchase Price**
50% of Appraised Value per Approved Developer Agreement
- **Purpose – Future Community Park**
- **Phase I constructed within 3-years of acquisition**





Park Access Area

- **Not subject to covenant restrictions**
- **0.91 acres**
Subject to boundary survey
- **\$523,263 – Purchase Price**
Appraised Value per sq. ft.
- **Purpose - Future Park entry and parking**

Prior Parks & Recreation Commission Review

Nov. 20, 2024 - VIC PSA Update and Approval

Nov. 15, 2023 - VIC Development Agreement Update

May 19, 2021 - Vancouver Innovation Center Report

April 21, 2021 - Vancouver Innovation Center Report

Jan. 21, 2020 - Vancouver Innovation Center Report

Dec. 16, 2020 - Vancouver Innovation Center Report

Nov. 18, 2020 - Vancouver Innovation Center Report





Next Steps

- Council consideration on July 14, 2025
- Initiate Due Diligence
- Closing in fall 2025
- Initiate Public Outreach & Master Plan processes



Thank You



PARK FACILITIES
City of Vancouver

PETER S. OGDEN



- Legend**
- Regional Park
 - Community Park
 - Neighborhood Park
 - Urban and Regional Natural Area
 - Special Facility
 - Other Public Lands
 - Schools
 - City of Vancouver
 - Vancouver Urban Growth Area
 - Park Impact Fee Districts





PARKS & TRAILS

- Neighborhood Park
- Community Park
- Urban Natural Area
- Regional Natural Area
- Existing Trail
- Proposed Trail
- City Boundary

PETER S. OGDEN
Vancouver School District

BURNT BRIDGE CREEK
REGIONAL NATURAL AREA

Royal Oaks Golf Course

OAKBROOK

BURNT BRIDGE CREEK
REGIONAL NATURAL AREA

THE DOWNS

CENTERPOINTE

FOURTH PLAIN BLVD.

NE 25th ST

NE 86th AVE.

NE BURTON RD

I - 205

Kevanna

Burton Ridge





Current Conditions

- Vancouver School Dist. Ownership
 - Rebuilt Elementary School
- Former School-Park location
 - 4.5-acre Public Park
 - 30+ Years under park agreement
 - Agreement expired
- 2-year good-faith negotiations for park acquisition
- Legacy Lands grant proposal to support Acquisition funding.
 - \$1 Million





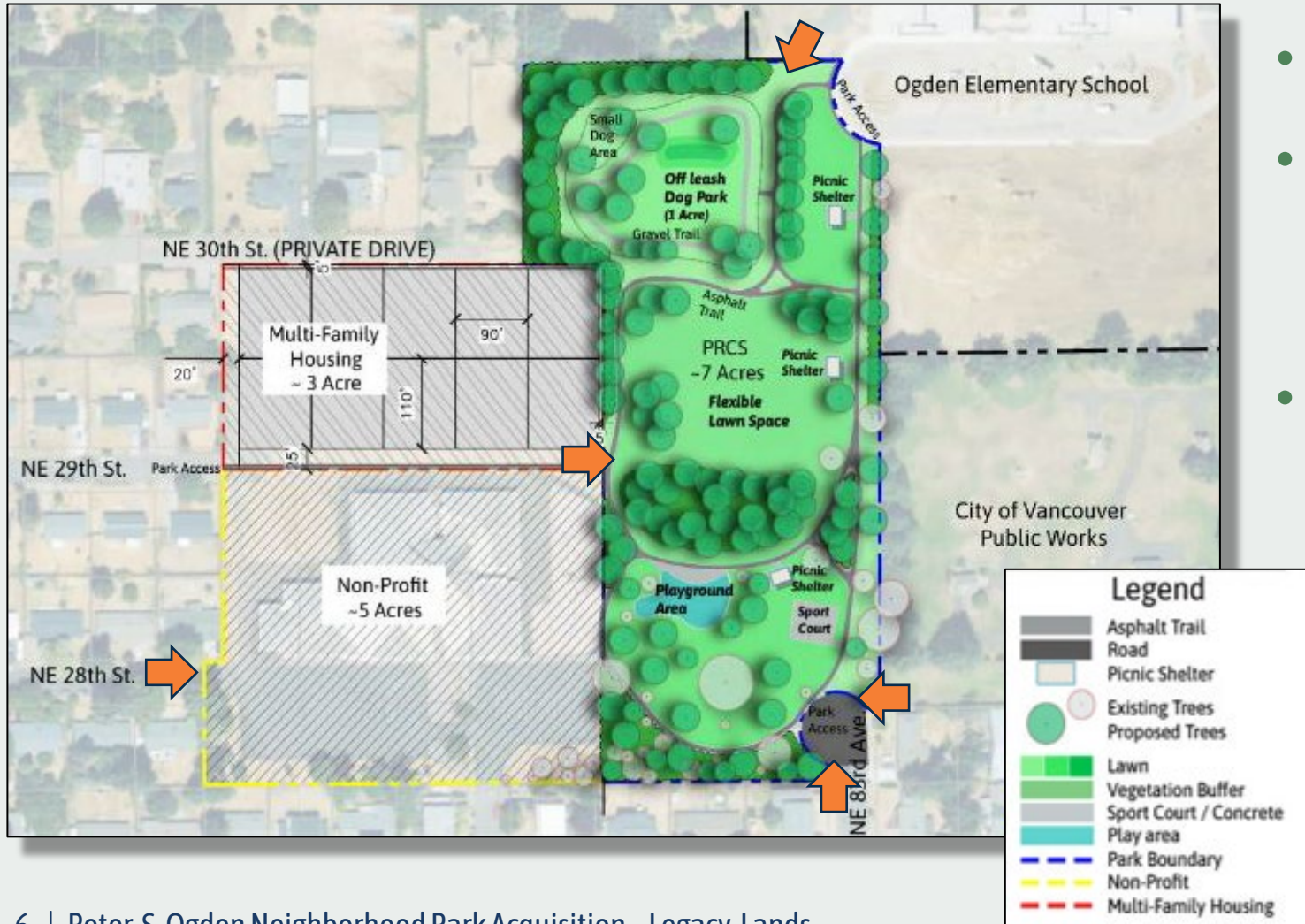
Marketed Area

- Vancouver School Dist. Marketing approx. 14 - acres
- Potential sale pending with Non-Profit
- Good-faith negotiations continue
- No change in support of community partnership





Conceptual Acquisition Site Plan

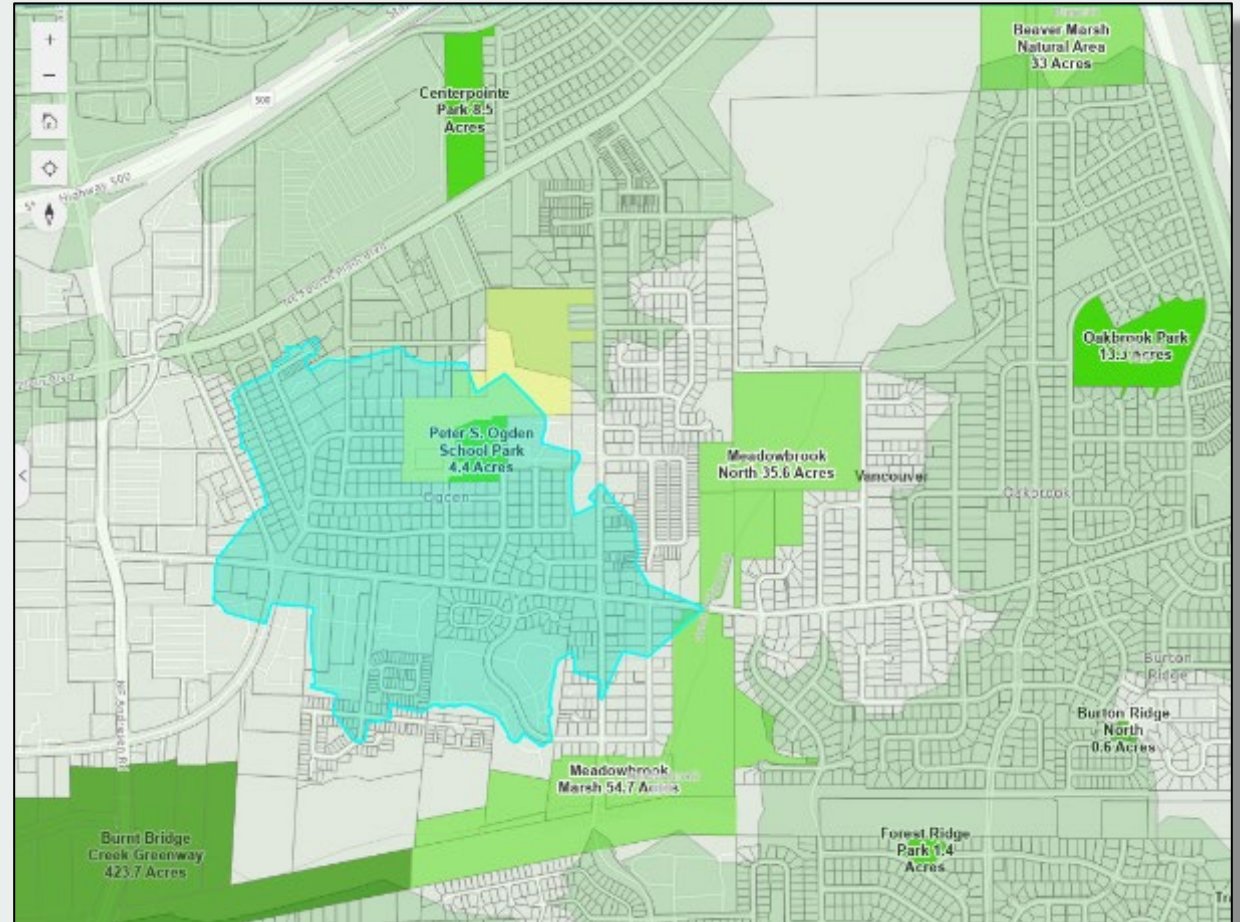


- 7+ acres for Public Park
- Non-Profit Partner
 - Old School & Parking Area
 - Mentor at-risk children
- Housing Component
 - Compatible with surrounding neighborhood



Park Comprehensive Plan Priority

- Park Impact Fee District B
- Existing 65-acre Park Deficit
- Increasing to 200-acres over next 20-years.
- ½ Mile Service Area
10-Minute Walkable Access
- 2,900 Current Residents



Next Steps

- **July / August** - Clark County Council work session
- **November** - Clark County Council hearing for project approval
- **December** - Interlocal grant agreement
- **Purchase & Sale Agreement** – Ideally by end of year
- **Secure acquisition funding balance**
- **Due Diligence**

